

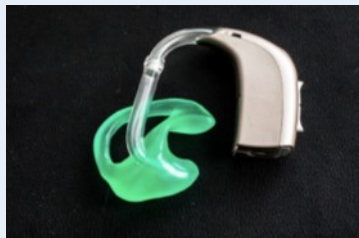
# Hearing aid fitting and cleaning information sheet

## Fitting your hearing aid

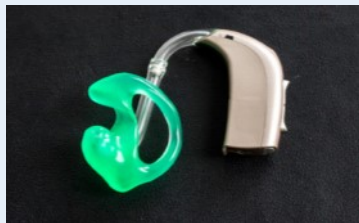
**Step 1:** The picture shows the main two parts the hearing aid and mould.



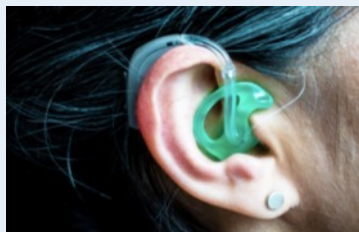
This picture shows the earmould **incorrectly** attached on the hearing aid.



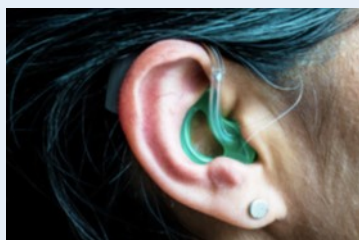
**Step 2:** This picture shows the earmould **correctly** attached on the hearing aid.



**Incorrectly** fitted hearing aid.



**Step 3:** Correctly fitted aid.



## Cleaning your hearing aid

Try to keep your thin tube clean by wiping daily with a mild wet wipe such as a baby wipe. If the tubing is blocked or the earmould gets very dirty, you can clean it in the following way



Detach the tube from the hearing aid with a firm tug. Be careful not to bend the tubing as a bend will stop the sound from going through to your ear from the hearing aid.



You should have been provided with a cleaning tube at your fitting appointment. Insert this through the top detached tubing to clear any debris or wax.



Reattach the tubing by 'clicking' it together with the hearing aid.

## Using your hearing aid with a telephone



The top of the handset needs to be positioned as closely as possible to the microphone on the hearing aid. This will be at the top of your ear.

## Other information



The hearing aid is turned on and off by opening and closing the battery compartment.



Replace batteries every 7 -10 days.

**Red markers** in the battery compartment indicate the aid is for a **right ear** and **blue markers** indicate the hearing aid is for the **left ear**.

The tube that connects the earmould to the hearing aid should always be **soft/ flexible**. When the tubing becomes hard/ less flexible it needs to be replaced as this affects the functioning of the hearing aid. Please contact the audiology department on **0300 3038640** to get the tubes changed.

### **Main Centre**

11 Shelley Road, Boscombe

Open Monday to Friday: No appointment necessary

9.00am until 4.30pm

### **Poole Healthcare Centre**

Boots, Dolphin Centre

Open Monday to Tuesday: No appointment necessary

9.00am to 12.00pm and 2.00pm to 4.00pm