

Care Groups and Operations Structure

If this document is printed – please check the intranet under ‘C’ - Care Group & Operations Management Structure Charts - to ensure this is the most up to date version.

Board of Directors



Judy Gillow
Interim Chair



Siobhan Harrington
Chief Executive
Officer



Dr Helena McKeown
Non-Executive
Director



Cliff Shearman
Non-Executive
Director



Claire Whitaker
Non-Executive
Director



John Lelliott
Non-Executive
Director



Sharath Ranjan
Non-Executive
Director



Tracie Langley
Non-Executive
Director



Femi Macauley
Non-Executive
Director



Andrew Doe
Associate
Non-Executive
Director



Pete Papworth
Chief Finance Officer



Sarah Herbert
Chief Nursing Officer



Mark Mould
Interim Chief
Operating
Officer



Dr Peter Wilson
Chief Medical Officer



Irene Mardon
Interim Chief
People Officer



Richard Renaut
Chief Strategy and
Transformation
Officer



Beverley Bryant
Chief Digital Officer

UHD Chief Officers



University Hospitals Dorset
NHS Foundation Trust

Slobhan Harrington



Chief Executive Officer

- NHS FT Accounting Officer
- Freedom to speak up
- Corporate affairs

Pete Papworth



Chief Financial Officer

- Strategic and operational finance
- Financial strategy, planning and modelling
- Capital planning and prioritisation
- Financial reporting and external audit
- Cash and treasury management
- Commissioning and contracting
- Procurement
- Commercial Development
- Payroll
- Counter fraud
- Internal audit
- CiP management and delivery
- National and local financial insight and intelligence
- Business cases
- Strategic and annual demand and capacity planning
- Business Intelligence

Dr Peter Wilson



Chief Medical Officer

- Professional leadership of medical staff
- SRO for Patient First
- Outcomes and clinical effectiveness
- Health promotion
- Public health
- Realistic medicine
- Patient consent
- Clinical networks
- Innovation, research and development
- Responsible officer for revalidation
- Medical education
- Caldicott Guardian

Sarah Herbert



Chief Nursing Officer

- Professional leadership of nurses, AHPs, and wider healthcare professionals
- Integrated governance
- Risk management
- Infection prevention and control
- Patient safety and experience
- Quality improvement
- Safeguarding
- Voluntary service
- PALS and complaints
- Legal services
- Claims and insurance
- Policy management
- Data protection and FOI
- Maternity Safety Champion

Mark Mould



Chief Operating Officer

- Operational management
- Performance delivery
- Performance reporting and management
- Business change / service improvement
- Productivity improvement
- Business continuity and emergency planning
- Complex Discharge Team
- Site management and security
- Facilities
- Transforming Care Together Service Ready

Irene Mardon



Interim Chief People Officer

- HR management
- Recruitment, retention and reward
- Bank and agency
- Employee relations
- Organisational development
- Staff engagement
- Education, training and, development
- People strategy
- Workforce planning
- Leadership
- Staff health and wellbeing (inc Occupational Health)
- Communications
- Equality, Diversity and Inclusion
- Health and Safety (workforce)

Richard Renaut



Director of Strategy and Transformation

- Corporate strategy and strategic planning
- Estates, Facilities and Capital Development
- Annual planning
- Clinical Services strategy
- Health and Safety (Estates)
- Charitable funds
- Partnerships

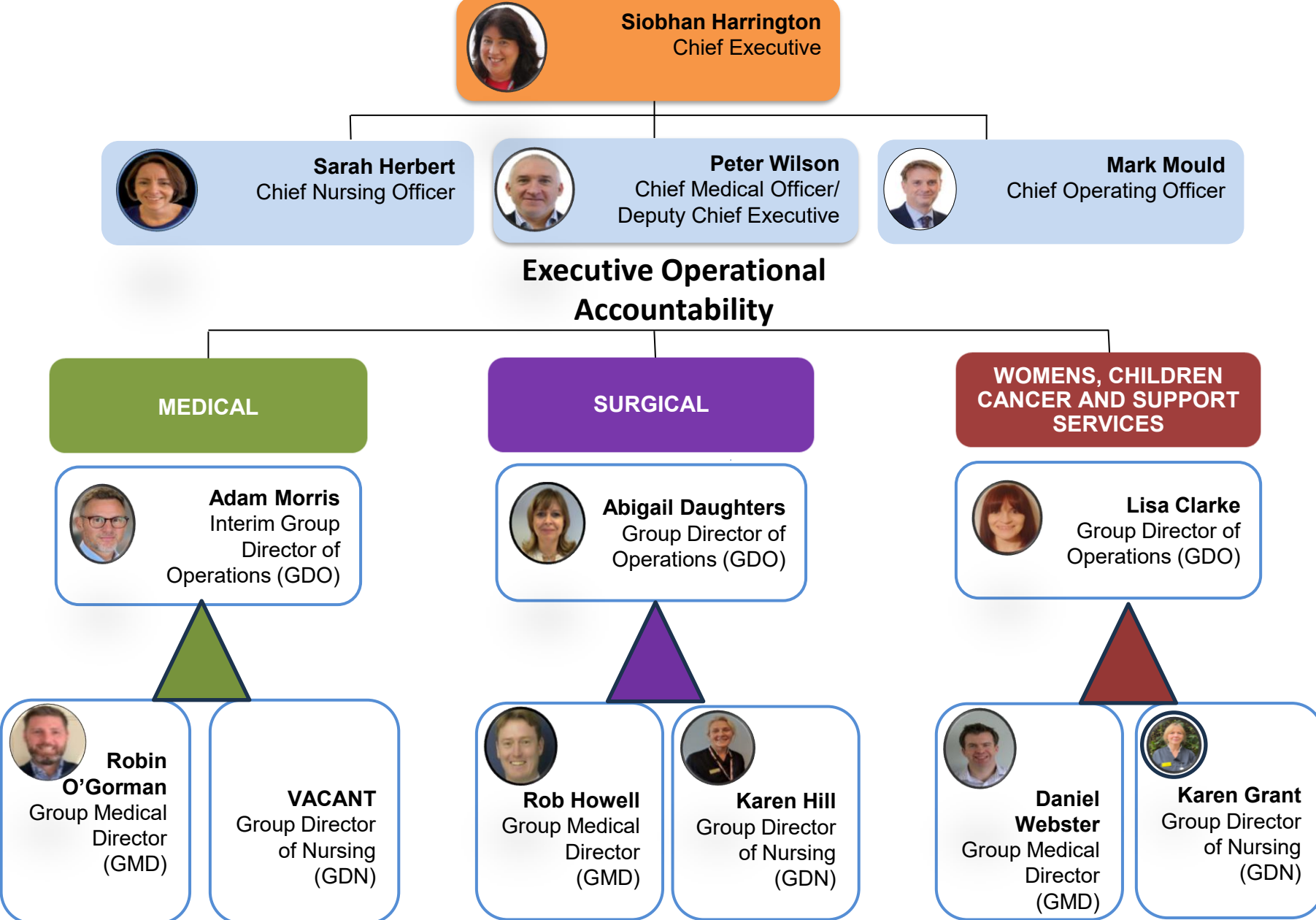
Beverley Bryant



Chief Digital Officer

- Digital strategy
- IT Operations
- Portfolio of IT Programmes
- Information Governance / Data Protection
- SRO for EHR programme

University Hospitals Dorset Care Group Structure



Chief Operating Officer – Team Structure

**Operational
Accountability**



Mark Mould
Chief Operating Officer

**Operational
Responsibility**

Interim
Deputy Chief
Operating
Officer

Mark Major

Interim Group
Director of
Operations -
Medical Care
Group

Adam Morris

Group Director of
Operations –
Women's, Children's,
Cancer and Support
Services Care Group

Lisa Clarke

Group Director
of Operations -
Surgical Care
Group

Abigail Daughters

Interim
Programme
& portfolio
support

Donna Parker

Director of
Operational
Performance &
Oversight

Judith May

Head of
Emergency
Planning &
Response

Mark Taylor

**Operational
Delivery**

Associate Director -
Operations, Flow &
Facilities

Leanne Aggas

Head of
Corporate Cancer

Katie Lake

Head of
Operations, Flow
& Facilities

Stuart Willes

Head of
Operations, Flow
& Capacity Planning

Stuart Wersby

General Manager-
Discharge Services

Antonia Gabrielli

Head of Security
& Portering

Stacy Fuszard

Directorate
Manager - Facilities

Philip Watson

Head of CSMT
& Flow

Rachel Cookson

Directorate Manager
Discharge Services

Val Horn

Integrated Care
Programme Manager

Lizzy Warrington

Implementation
Manager CDC

Karen Bew

Interim Head
of Access

Sue Whitney

General Manager
Outpatients

Sara Curtin

Operations
Business
Manager

Kerry-Ann Rostom

Efficiency
Improvement
Manager

Tracey Jones

Efficiency
Improvement
Manager

Simon Jones

Efficiency
Improvement
Manager

Gemma Maxton

Efficiency
Improvement
Manager

Phillip Bush

OP Clinical
Director

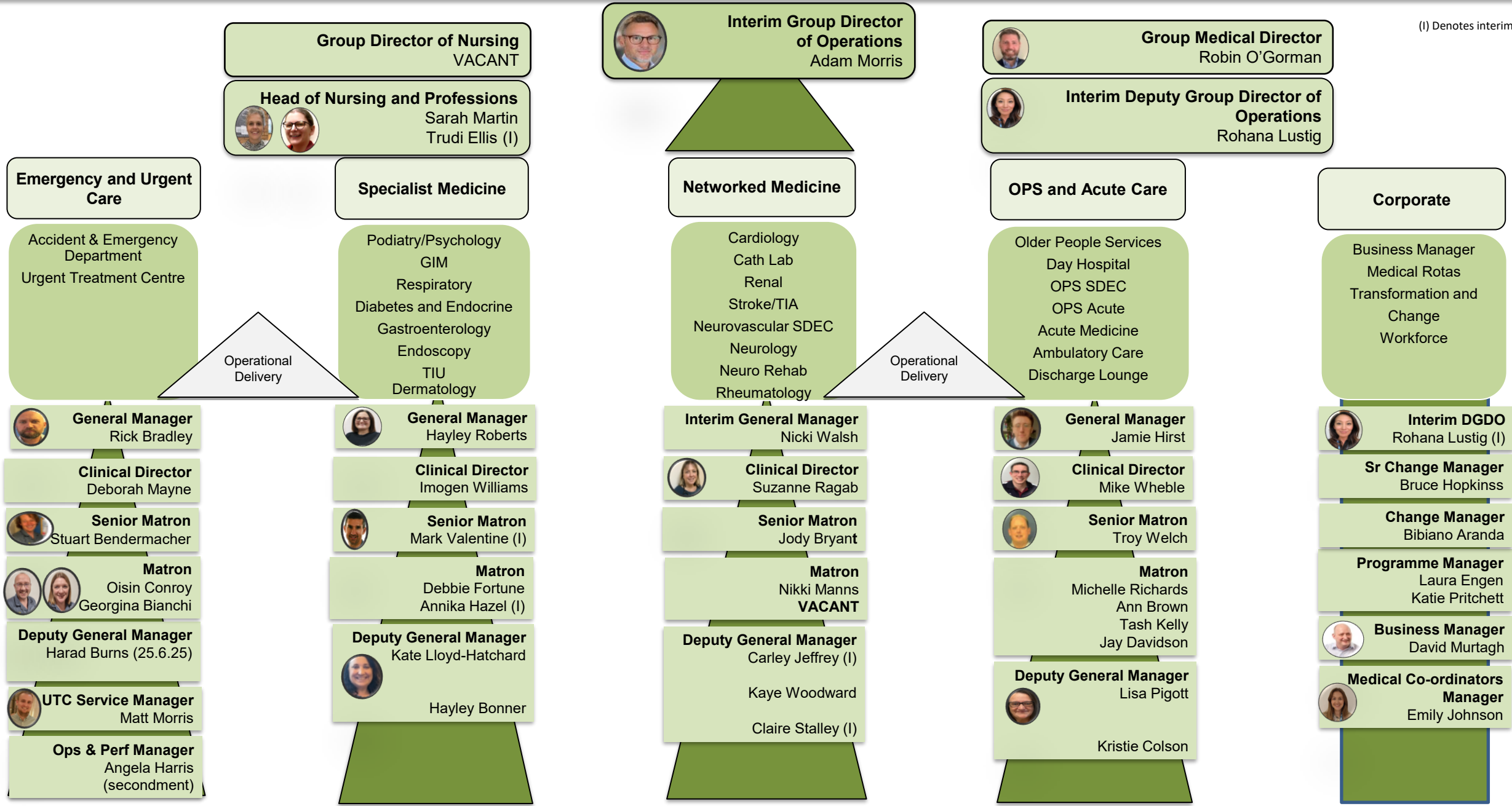
Rob Moverley

Deputy General
Manager
Outpatients

Chris Gwyther

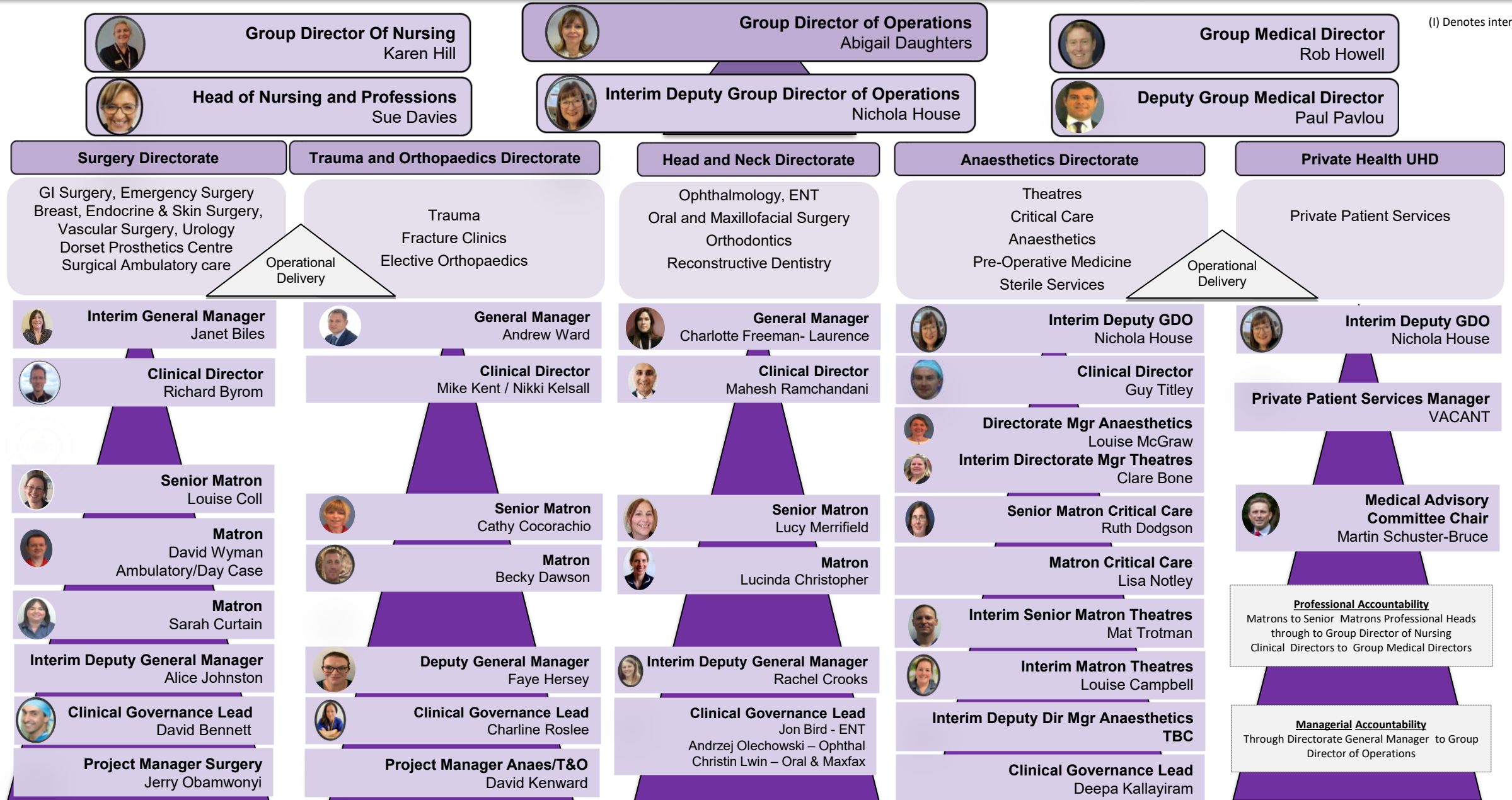
Medical Care Group

(I) Denotes interim

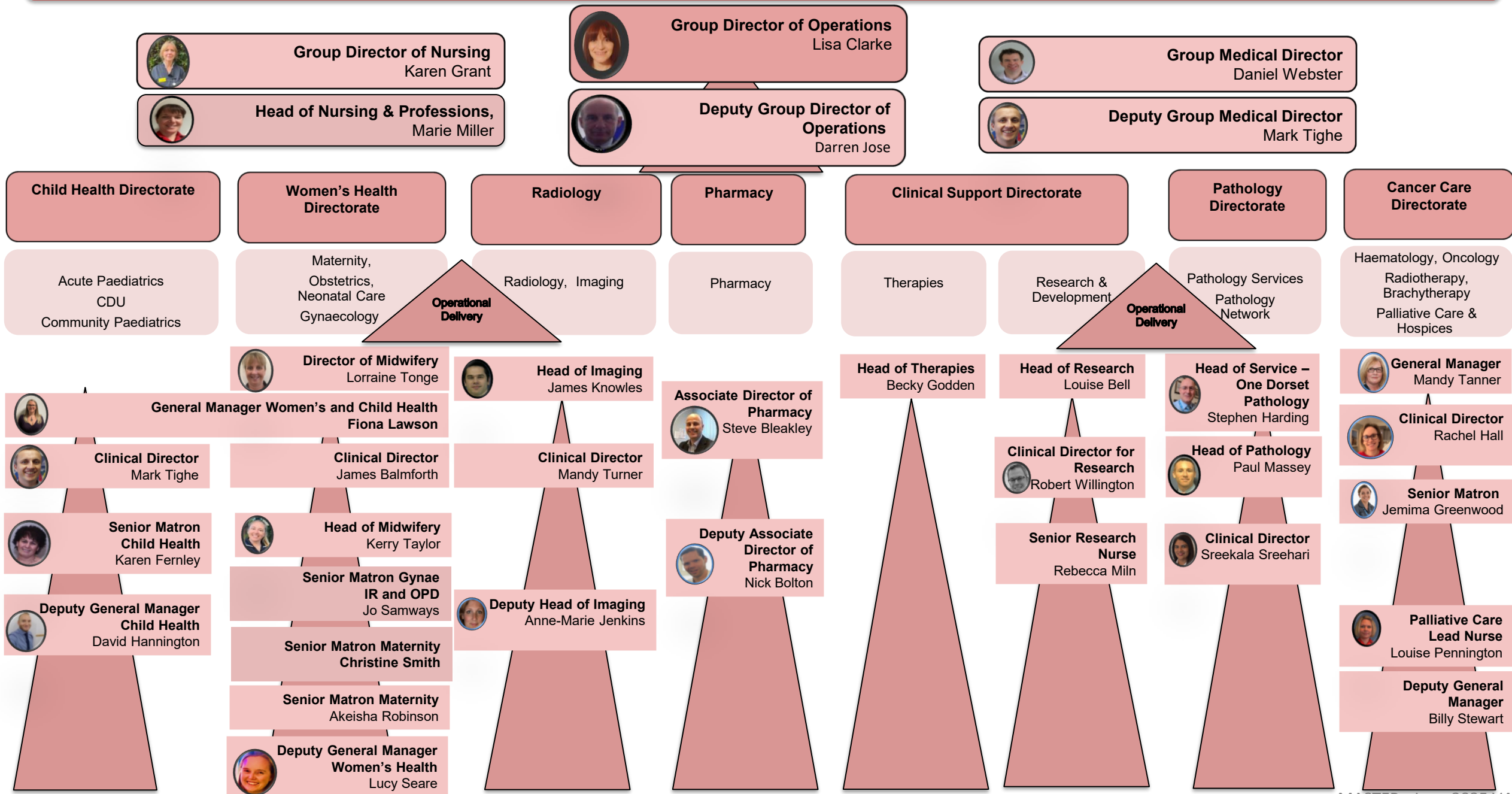


Surgical Care Group

(I) Denotes interim



Women's, Children, Cancer and Support Services Care Group



University Hospitals Dorset – Clinical Care Group Structure

