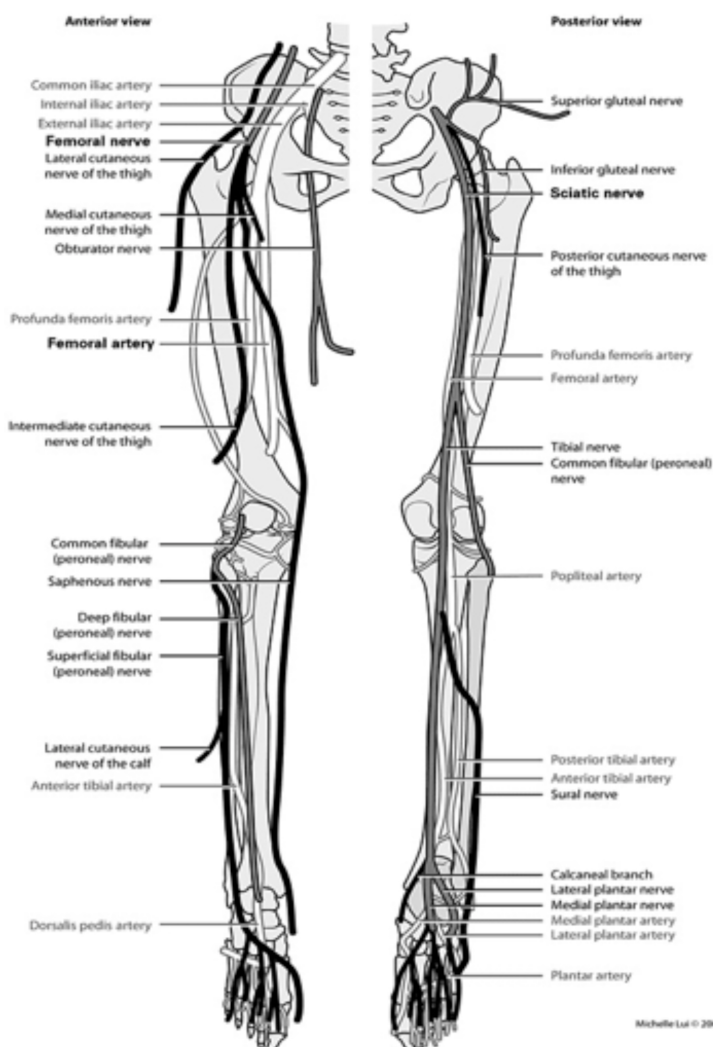


# Arterial leg duplex - Doppler ultrasound scan

## What is the purpose of this information leaflet?

This leaflet will provide information regarding a test you have been referred for.



## What is this test measuring and what is it for?

We use a specialised form of ultrasound scanner (known by many people as the type of machine used for scanning babies in the womb). This gives us images of the tissues and blood vessels in your legs/pelvis and information on the blood flow through them.

Arteries are the blood vessels that transport newly oxygenated blood from the heart to the tissues. Using the images and measurements of blood speed and volume we are able to accurately determine if there is any narrowing, enlargement, or blockage in the arteries and, if so, how severe this is.

Narrowing or blockage of arteries in the leg can cause intermittent claudication - an ache in the leg brought on by exercise (usually walking). This ache will generally go away when the exercise is stopped. It is sometimes associated with a severe shortage of blood supply to the leg or foot which may require urgent attention.

## Preparing for your test

No preparation is needed but you will need to expose your leg from the groin downwards to allow access for the ultrasound probe. A loose fitting skirt, dress (or kilt!) may therefore be useful. Alternatively trousers will need to be removed. We often need to scan arteries between your navel and your groin, so underwear may need to be adjusted as appropriate. We will do our best to keep you as covered as possible to protect your privacy and dignity.

## Who performs the test?

A qualified vascular scientist will perform the scan, usually with an assistant in the room. Sometimes a vascular scientist trainee may perform your scan, but will be supervised during the scan and in writing the report.

## What to expect during the test

You will lie on a couch with your head on a pillow. The lights will be dimmed. Warmed water based gel will be placed on your leg and a small ultrasound probe placed on your skin. It will slowly be moved while the vascular scientist looks at images on the screen.

## Does it hurt?

It should not hurt at all. Only light pressure is applied to the skin.

## How long does it take?

Usually about 30 minutes per leg.



## Will the results be explained to me?

Further analysis is usually necessary with review of the images and measurements, so we may only be able to give you a summary of the scan findings at the time of the scan.

## How soon will my referring doctor receive my results?

Reports are usually written immediately after the test has been completed and are available on the hospital's information system within a few minutes. A printed copy of the report is sent to the referring doctor the next working day.

# Where can I get further advice or information, or change /cancel an appointment?

If you need further advice or want to make changes to your appointment, please contact the Medical Physics Department on **0300 019 4569**, 9am-5pm, Monday to Friday.

**Scan the QR codes to load the websites on your smartphone**



You can visit the University Hospitals Dorset Website: **[www.uhd.nhs.uk](http://www.uhd.nhs.uk)** or read the patient information available in the Medical Physics waiting area before your test.



You could also visit the website of the Society for Vascular Technology of Great Britain and Ireland: **[www.svtgbi.org.uk](http://www.svtgbi.org.uk)**. This is the society whose standards we follow in performing our non-invasive vascular diagnostic work.



The Circulation Foundation is the UK Vascular charity: **[www.circulationfoundation.org.uk](http://www.circulationfoundation.org.uk)**. Its mission is to promote awareness into vascular conditions and to support vital research.

---

The Royal Bournemouth Hospital, Castle Lane East, Bournemouth, Dorset, BH7 7DW

Author: **Dominic Foy** Date: **March 2022** Version: **Two** Review date: **March 2025** Ref: **062/22**

t: 01202 303626 w: [www.uhd.nhs.uk](http://www.uhd.nhs.uk) : @UHD\_NHS : @UHDTrust : @uhd\_nhs