



University Hospitals Dorset
NHS Foundation Trust

Care Groups and Operations Structure

August 24
Master Version 1

Board of Directors



Rob Whiteman
Chair



Siobhan Harrington
Chief Executive
Officer



Dr Helena McKeown
Non-Executive
Director



Pankaj Davé
Non-Executive
Director



Cliff Shearman
Non-Executive
Director



Claire Whitaker
Non-Executive
Director



John Lelliott
Non-Executive
Director



Judy Gillow
Non-Executive
Director



Sharath Ranjan
Non-Executive
Director



Pete Papworth
Chief Finance Officer



Sarah Herbert
Chief Nursing Officer



Mark Mould
Chief Operating
Officer



Dr Peter Wilson
Chief Medical Officer



Tina Ricketts
Chief People Officer



Richard Renaut
Chief Strategy and
Transformation
Officer



Dr David Broadley
Medical Director
Integrated Care (GP)



Chief Executive Officer
Siobhan Harrington

Corporate / Executive Team



Chief Medical Officer
Peter Wilson

- Medical – Responsible Officer,
- Governance, Risk & Safety
- Medical Examiners
- Clinical Claims and Inquests (inc. Learning from Deaths)
- Caldicott Guardian



Chief Nursing Officer
Sarah Herbert

- Quality, Governance & Risk (inc Clinical Audit & Effectiveness, Risk Management, Quality Assurance – CQC, Health & Safety)
- Patient Experience (inc Chaplaincy, Complaints, PALS & Volunteers)
- Clinical Practice Infection Control
- Safeguarding Adults & Children



Chief Finance Officer
Pete Papworth

- Finance
- Commercial Services
- Business Intelligence



Chief Strategy & Transformation Officer
Richard Renaut

- Estates (inc Clinical Engineering)
- Strategy & Transformation
- Quality & Improvement



Chief People Officer
Tina Rickets

- Communications
- Education & Training
- HR Operations / HR Strategy
- Organisational Development
- Workforce Development, Strategy & Planning
- Occupational Health



Chief Operating Officer
Mark Mould

- Surgical / Medical / Specialties Care Groups
- Operations, Flow & Facilities
- Partnership, Integration & Discharge
- Emergency Planning
- Operational Performance, Assurance & Delivery


Chief Digital Officer
TBC

- IT / Telecoms
- Health Records
- Information Governance


University Hospitals Dorset Care Group Structure




Siobhan Harrington
Chief Executive



Sarah Herbert
Chief Nursing Officer



Peter Wilson
Chief Medical Officer



Mark Mould
Chief Operating Officer

**Executive Operational
Accountability**

MEDICAL

SURGICAL


WOMENS, CHILDREN CANCER AND SUPPORT SERVICES



Leanna Rathbone
Group Director of
Operations Medicine
(GDO)



Abigail Daughters
Group Director of
Operations Surgical
(GDO)



Sarah Macklin
Group Director of
Operations
WCCSS (GDO)



Robin O'Gorman
Group Medical
Director(GMD)



Maddy Seely
Group Director
of Nursing
(GDN)



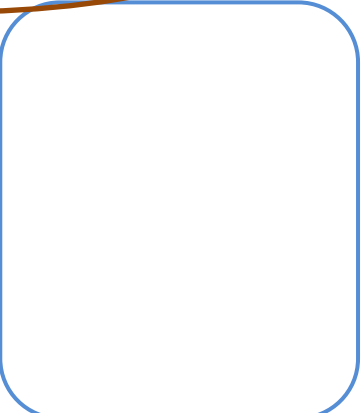
Rob Howell
Group Medical
Director (GMD)



Karen Hill
Group Director
of
Nursing(GDN)



**Daniel
Webster**
Group Medical
Director
(GMD)



Chief Operating Officer - Team Structure

**Operational
Accountability**

Chief Operating Officer
Mark Mould



**Operational
Responsibility**

Interim Deputy
Chief Operating
Officer



Mark Major

Medical Care
Group



Leanna Rathbone

Women's, Children's,
Cancer and Support
Services Care Group



Sarah Macklin

Surgical Care
Group



Abigail Daughters

Interim
Programme
& portfolio support



Donna Parker

Director of
Operational
Performance &
Oversight



Judith May

Head of
Emergency Planning
& Response



Mark Taylor

**Operational
Delivery**

Associate
Director -
Operations, Flow
& Facilities



Leanne Aggas

Head of
Operations, Flow
& Capacity Planning



Stuart Wersby

Head of
Operations, Flow
& Facilities



Stuart Willes

General Manager-
Discharge Services



Antonia Gabrielli

Acting Head of
Discharge & Interim
Care Services



Val Horn

Programme
Manager –
Integrated Care



Lizzy Warrington

Implementation
Manager



Karen Bew

Head of
Access



Jonathan Wright

Head of
Corporate Cancer



Katie Lake

Operations
Business Manager

Kerry-
Ann Morrison-
Rostom

Head of
CSMT
& Flow

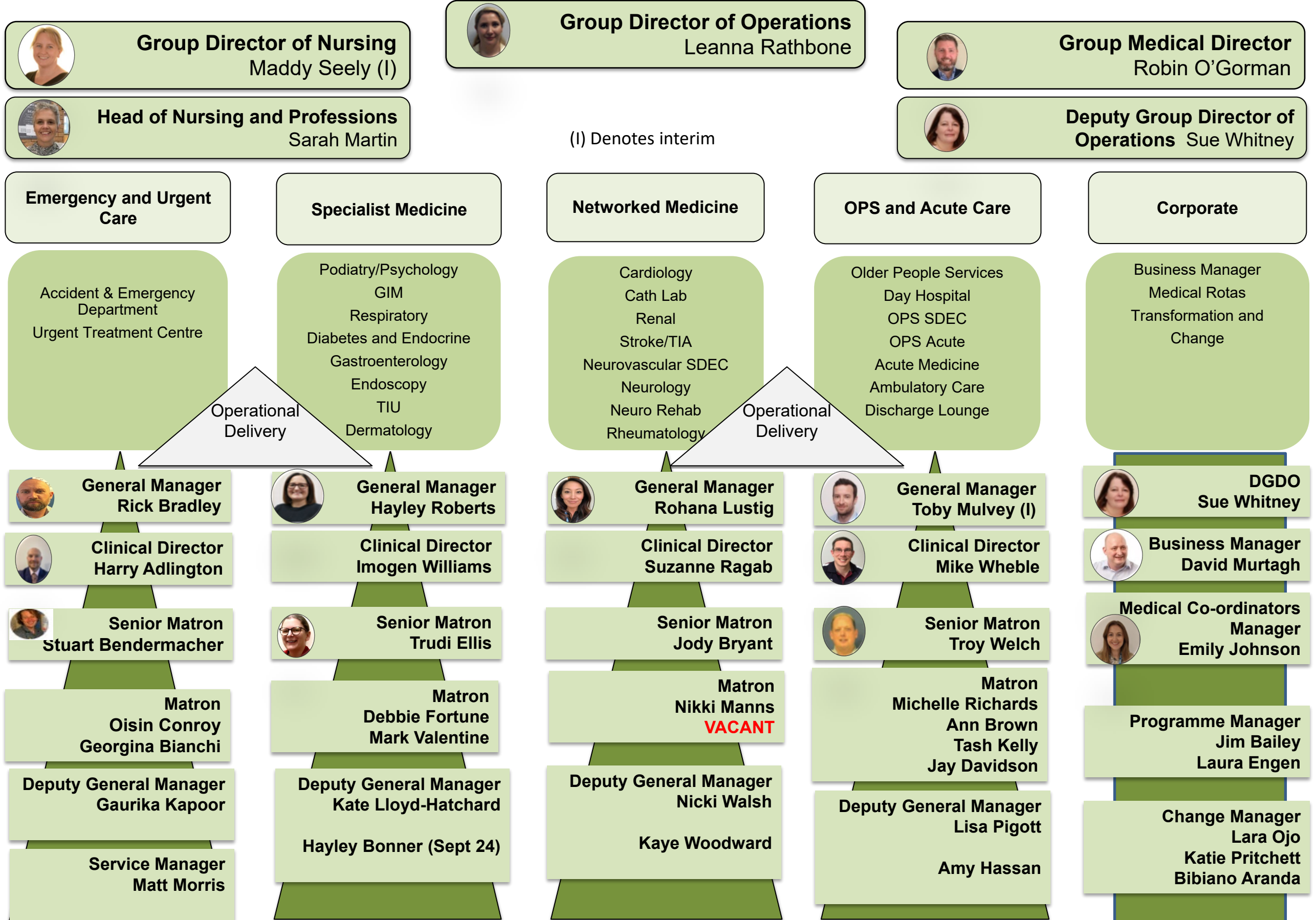
Rachel Cookson
(July 24)

Directorate
Manager -
Facilities



Philip Watson

Medical Care Group



Surgical Care Group



Interim Group Director of Nursing
Karen Hill



Group Director of Operations
Abigail Daughters



Group Medical Director
Rob Howell



Interim Head of Nursing & Professions
Sue Davies



Interim Deputy Group Director of Operations
Nichola House

Surgery Directorate

GI Surgery, Emergency Surgery
Breast, Endocrine & Skin Surgery,
Vascular Surgery, Dorset
Prosthetics Centre
Surgical Ambulatory care
Urology

Trauma & Orthopaedics Directorate

Trauma
Fracture Clinics
Elective Orthopaedics

Head and Neck Directorate

Ophthalmology
ENT
Oral and Maxillofacial
Surgery
Orthodontics
Reconstructive Dentistry

Anaesthetics Directorate

Theatres
Critical Care
Anaesthetics
Pre-Operative Medicine
Sterile Services

Private Health UHD

Private Patient Services

Operational Delivery

Operational Delivery



Interim General Manager
Janet Biles



General Manager
John West



General Manager (Transformation)
Barry Alborough-Duell



Interim Deputy GDO
Nichola House



Interim Deputy GDO
Nichola House



Clinical Director
Richard Byrom



Clinical Director
Paul Pavlou



Interim General Manager
Charlotte Freeman-Laurence



Clinical Director
Guy Tiley



Private Patient Services Manager
Jo Clothier



Senior Matron
Louise Coll



Interim Senior Matron
Cathy Cocorachio



Interim General Manager
Charlotte Freeman-Laurence



Directorate Managers
Louise McGraw
Clare Bone (Interim)



Medical Advisory Committee Chair
Martin Schuster-Bruce



Matron
David Wyman
Ambulatory/Day Case



Interim Matron
Grant Willats



Clinical Director
Mahesh Ramchandani



Senior Matron
Eoin Scott - Critical Care
Mat Trotman - Theatres (Interim)



Matron
Sarah Curtain



Senior Matron
Lucy Merrifield



Matron
Ruth Dodgson - Critical Care
Louise Campbell - Theatres



Interim Deputy General Manager
Vacant



Deputy General Manager
Faye Hersey



Matron
Lucinda Christopher



Transformation
Andrew Ward - Theatres

Women's, Children, Cancer and Support Services Care Group

Group Director of Nursing
Karen Grant (Nov 24)



Group Director of Operations
Sarah Macklin



Group Medical Director
Daniel Webster



Head of Nursing & Professions,
Marie Miller



Deputy Group Director of Operations
Darren Jose



Deputy Group Medical Director
Mark Tighe

Child Health Directorate

Women's Health Directorate

Radiology and Pharmacy

Clinical Support Directorate

Pathology Directorate

Cancer Care Directorate

Acute Paediatrics
CDU/NICU
Community Paediatrics

Maternity, Obstetrics
Gynaecology

Radiology, Imaging
& Pharmacy

Operational Delivery

Outpatients/ Therapies
Research & Development

Pathology Services
Pathology Network

Haematology, Oncology
Radiotherapy,
Brachytherapy
Palliative Care &
Hospices

General Manager Women's and Child Health
Fiona Lawson



Head of Imaging
James Knowles

General Manager for Outpatients
Sara Curtin



Head of Service – One Dorset Pathology
Stephen Harding



General Manager
Mandy Tanner

Clinical Director
Mark Tighe

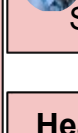


Clinical Director
Alex Taylor

Clinical Director Radiology
Mandy Turner

Clinical Director Outpatients
Rob Moverley

Clinical Director Research & Innovation
Robert Willington



Head of Pathology
Paul Massey



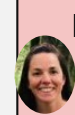
Clinical Director
Rachel Hall

Senior Matron
Karen Fernley



Associate Director of Midwifery
Lorraine Tonge

Associate Director of Pharmacy
Steve Bleakley



Head of Therapies
Katherine Armitage



Head of Pathology
Paul Massey



Palliative Care Lead Nurse
Louise Pennington

Senior Matron for Outpatients, Gynae and Radiology
Jo Samways

Head of Research
Louise Bell



Clinical Director
Sreekala Sreehari

Matron NICU Interim – Dan Bundy

Head of Midwifery
Kerry Taylor

Deputy Head of Imaging
Anne-Marie Jenkins

Deputy GM Child Health
David Hannington

Deputy GM Women's Health
George Floyd

Deputy ADP
Nick Bolton



Deputy GM Outpatients
Chris Gwyther

Deputy General Manager
Nikki Jones

UNIVERSITY HOSPITAL DORSET - CLINICAL CARE GROUP STRUCTURE

Medical Care Group

Emergency and Urgent Care Directorate
 Accident & Emergency Department
 Urgent Treatment Centre

Specialist Medicine
 Podiatry/Psychology
 GIM
 Respiratory
 Diabetes and Endocrine
 Gastroenterology
 Endoscopy
 TIU
 Dermatology

Networked Medicine
 Cardiology
 Cath Lab
 Renal
 Stroke/TIA
 Neurovascular SDEC
 Neurology
 Neuro Rehab
 Rheumatology

OPS and Acute Care
 Older People Services
 Day Hospital
 OPS SDEC
 OPS Acute
 Acute Medicine
 Ambulatory Care
 Discharge Lounge

Corporate
 Business Manager
 Medical Rotas
 Health and Wellbeing
 Transformation

Surgical Care Group

Surgery Directorate
 GI Surgery
 Emergency Surgery
 Breast, Endocrine & Skin Surgery
 Vascular Surgery
 Dorset Prosthetics Centre
 Urology
 Surgical Ambulatory care

Anaesthetics Directorate
 Theatres
 Critical Care
 Anaesthetics
 Peri-operative Medicine
 Sterile Services

Head Neck Directorate
 Ophthalmology
 ENT
 Oral and Maxillofacial Surgery
 Orthodontics
 Reconstructive Dentistry

Trauma & Orthopedics Directorate
 Trauma
 Fracture Clinics
 Elective Orthopedics

Private Health UHD

Women's, Children, Cancer and Support Services Care Group

Child Health Directorate
 Acute Paediatrics
 Child Development Unit
 NICU
 Community Paediatrics

Women's Health Directorate
 Maternity / Obstetrics
 Gynaecology

Cancer Care Directorate
 Hematology/Oncology
 Radiotherapy Brachytherapy
 Palliative Care /Hospices

Radiology & Pharmacy Directorate
 Radiology / Imaging
 Pharmacy

Clinical Support Directorate
 Outpatients
 Therapies
 Research & Development

Pathology Directorate
 Pathology Services
 Pathology Network

Operations

Clinical Site Management
 Clinical Site Teams
 Hospital at night
 Resuscitation & Outreach

Facilities
 Catering
 Portering & Security
 Housekeeping/Cleaning
 Patient Transport logistics

Partnership, Integration & Discharge
 Discharge Team
 Interim Care

Emergency Planning (EPPR)

Operational Performance, Assurance & Delivery
 Cancer
 Diagnostics
 RTT
 Urgent & Emergency Care