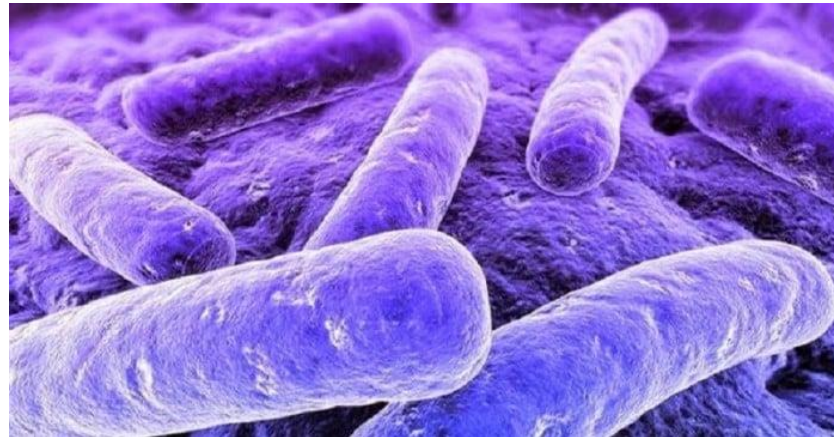


Volunteers Infection Control Mandatory Training



We are
caring
one team
listening to understand
open and honest
always improving
inclusive

COVID Reminders



University Hospitals Dorset
NHS Foundation Trust

Please Remember....
Wear your MASK

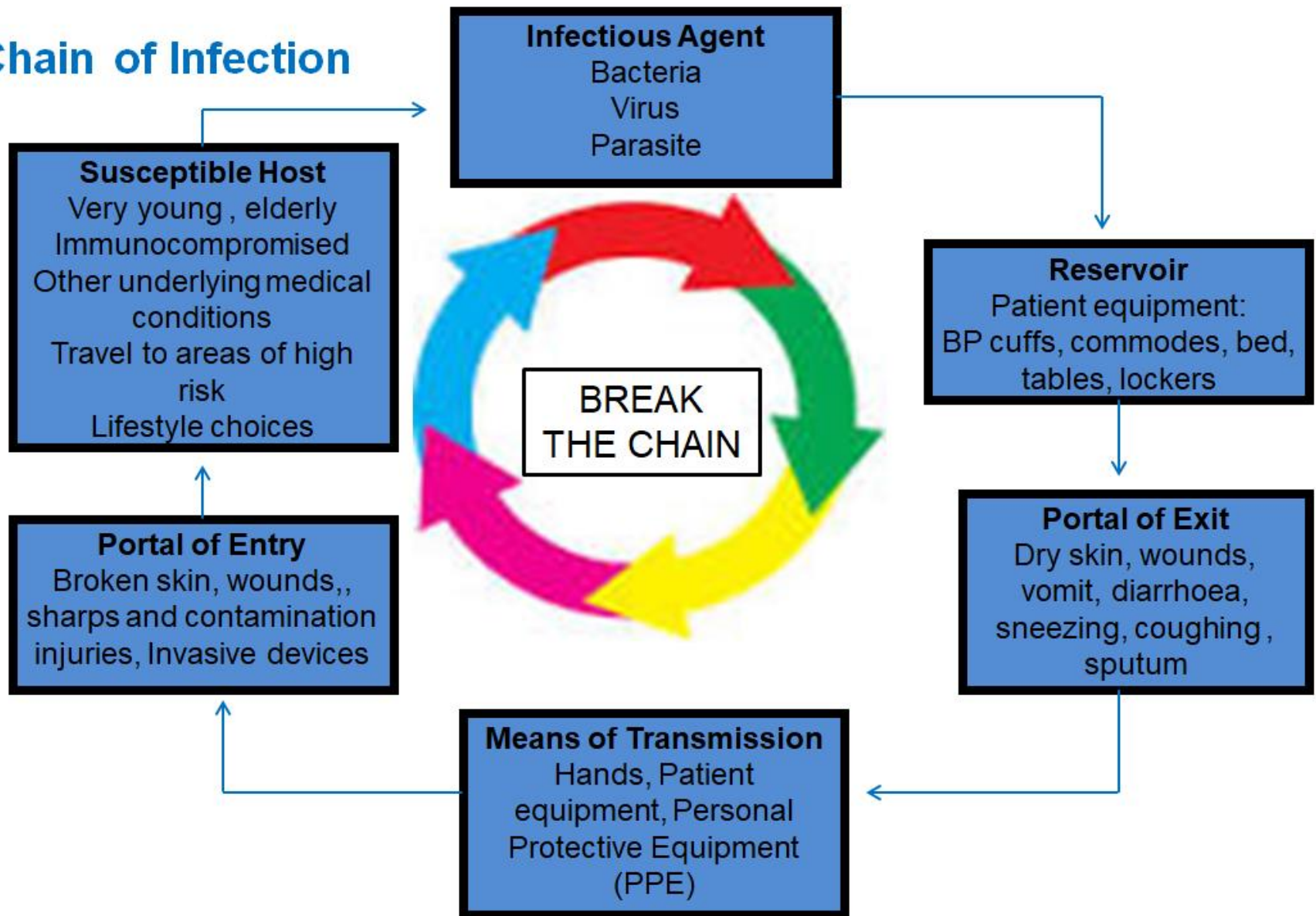


Good hand
hygiene

Keep your distance



Chain of Infection



Protect yourself and prevent the spread of infection

- Do not attend the hospital with any Covid or flu like symptoms
- Coughs and colds – observe strict respiratory and hand hygiene
- Diarrhoea and vomiting? Please do not come to the hospital until 48hrs clear of last symptoms
- Dermatitis –Do not attend clinical areas if you have any inflamed or broken skin. Use hospital approved hand sanitizers and moisturiser. Contact OH if any issues occur.
- Contact Voluntary Services if any queries.

Bare Below The Elbow!



- Wear short sleeved shirts blouses – cuffs become heavily contaminated with organisms.
- Short, clean finger nails, no shellac, acrylic or gel extensions!
- Do not wear hand or wrist jewellery including watches, charity/festival bands & activity trackers.

**All the above harbour micro-organisms
&**

**REDUCES COMPLIANCE WITH HAND
HYGIENE!**

Hand Hygiene

Hand washing with soap and water, should take 40-60 seconds following the 6 steps
Alcohol Gel, should take 20-30 seconds following the same 6 steps

- Wet hands with water
- Apply enough soap to cover all hand surfaces



1. Rub palm to palm.



2. Rub right palm over back of left hand as far up as the wrist and vice versa.



3. Rub hands together, palm to palm with fingers interlaced.



4. Rub the backs of the fingers, interlocked, to opposite palm.

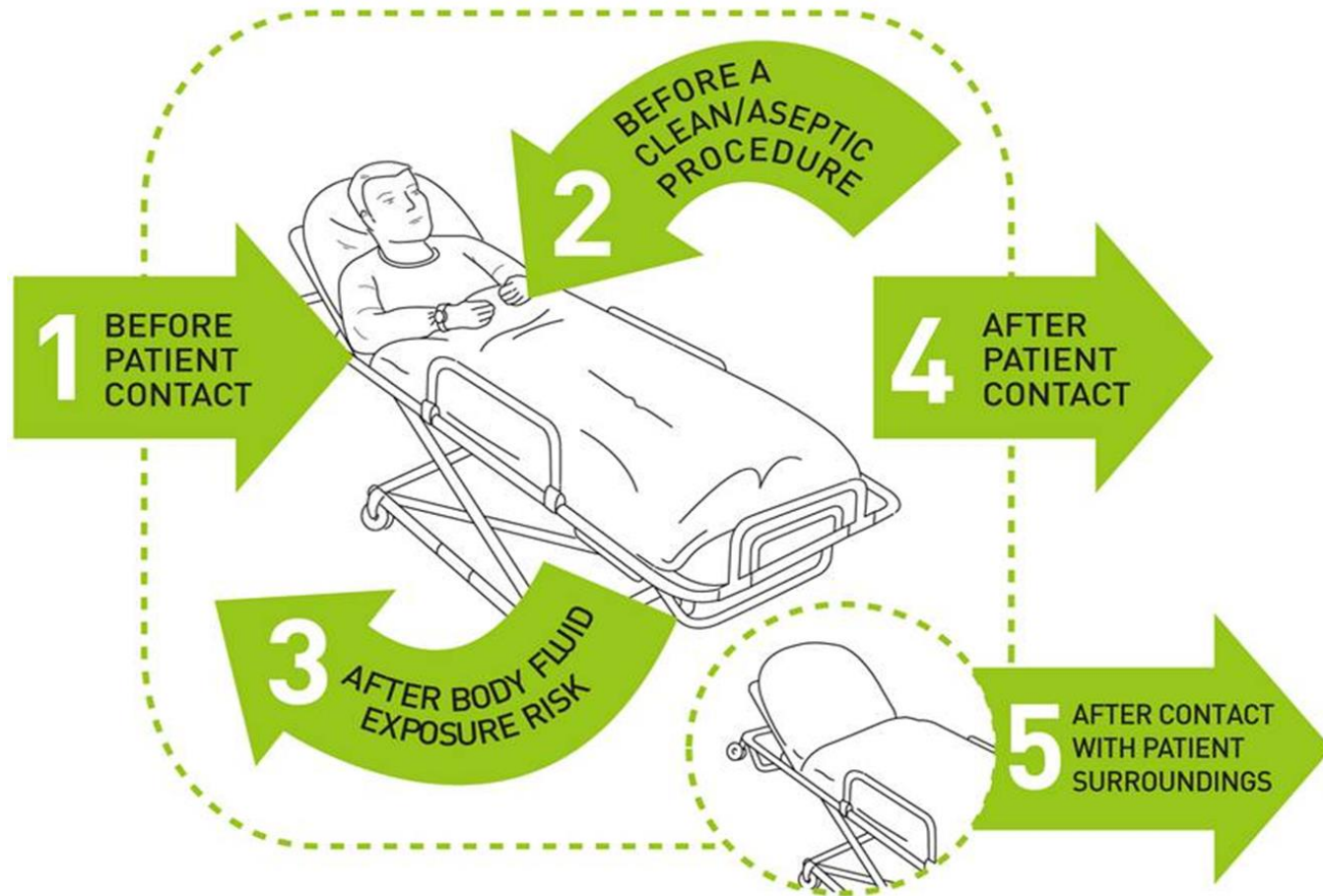


5. Use the left hand to clasp the thumb and rub rotationally to include the wrist and vice versa.



6. Rub the fingers of the right hand.

5 Moments



CLINICAL ZONES



We are **caring** **one team** **listening to understand** **open and honest** **always improving** **inclusive**

PERSONAL PROTECTIVE EQUIPMENT



Decontamination – Risk Assessment

Low risk

Yellow Detergent Sani-Cloth
For general use on all equipment
where patients are NOT thought
to be an Infection risk.



Medium risk

Green Top Sani-Cloth Active
For all Medical and Electrical devices



Orange Top Chlor + 1000

Chlor-Clean Tabs 1 tablet = 1 litre of water
=1,000ppm

For use on equipment when
Infection present or suspected.



Haz-Tabs

For use on Blood spillages and blood stained body fluids

4 tablets = 1 litre of cold water = 10,000ppm



Wipes single use only. Drizzle bottles to be made up fresh each day.

Sharps Safe Practice

Please contact a member of staff if you notice any sharps incorrectly disposed of. Do not place any sharps in waste bins

- Should a Sharps injury occur you must practice First Aid as soon as possible:
- Encourage free bleeding of any wound but **do not suck** the wound.
- Wash skin wounds with soap and running water **but do not scrub**.
- Flush eyes, nose and mouth with running water. If contact lenses are used, flush before and after removal.
- You must always report an injury to your manager and Occupational Health (out of hours bleep site manager and attend ED) and the manager of your area to complete an **AIR form via DatixWeb**.



Are you carrying Norovirus?



You could be if you have had any diarrhoea or vomiting in the last 72 hours, or have been in contact with someone who has.

Please **do not** visit patients in the hospital if there is any risk that you are carrying the bug.

Be a responsible visitor and don't spread Norovirus to others.

www.rbch.nhs.uk

FIGHTING INFECTION TOGETHER

ISOLATION PRECAUTIONS

Please seek advice from Nursing Staff before entering

Infection Control

Ward Closed

**No visiting whilst ward
is closed**

At the discretion of the nurse in charge prior permission may be granted in exceptional circumstances

**Only essential hospital
staff to enter**

Please perform hand hygiene on entering the ward
Before leaving the ward wash your hands
with soap and water

Thank you for your support



**Working together
to prevent infection**

Putting patients first

The Royal Bournemouth and
Christchurch Hospitals **NHS**
NHS Foundation Trust

Do's and Don'ts

✓ DO:

- Contact your Infection Control Resource Nurse to complete Practical Hand Hygiene assessment within one week of starting your clinical volunteer role and ANNUALLY thereafter
- Adhere to Trust dress codes – no long sleeves, bare below the elbows
- Consult with nurse-in-charge re: restricted areas
- Have individual alcohol hand gels
- Listen to Infection control advice
- Question

✗ DON'T

- Wear rings, watches, bracelets or long sleeve clothing
- Attend the hospital if experienced any diarrhoea / vomiting until 48hrs clear or have Covid symptoms
- Enter isolation rooms
- Sit on the beds
- Eat or drink within the clinical environment.

Contact details

- RBCH I.C. Office: Ext 4842
- Urgent Bleep: 2775