

Royal Bournemouth Hospital site plan



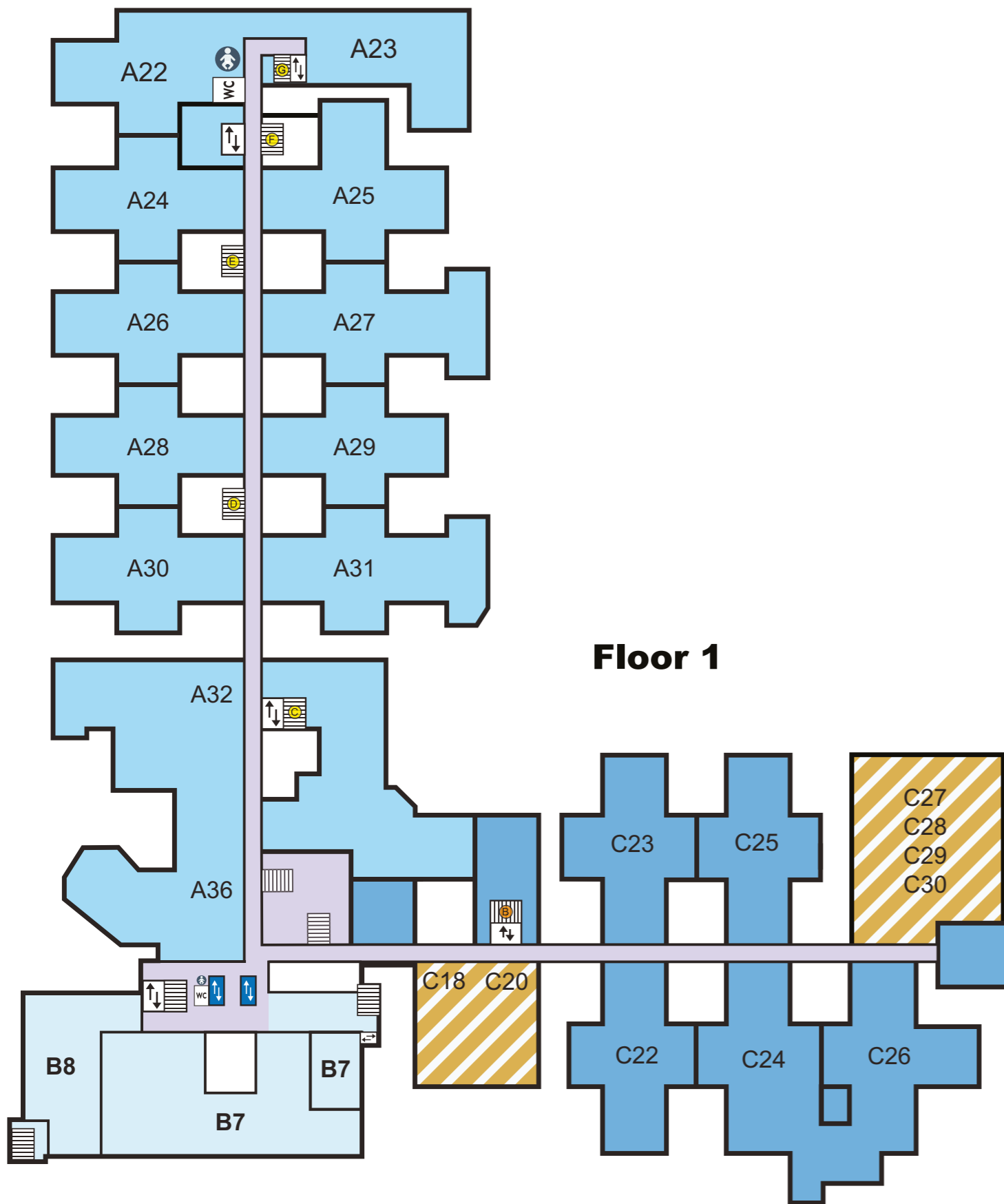
Key

- Corridors
- Stairs
- Lifts Staff lifts
- Baby change
- Coffee Shop
- Staff (only) Restaurant
- Shop
- Toilets
- Disabled toilets
- Pharmacy
- Helicopter pad
- Car parking for patients and visitors
- Disabled car parking
- Staff car parking
- Bus Hub
- Drop off point
- Bike hoops
- Secure staff cycle compound
- Building works
- Zone A
- Zone B
- Zone C
- Externally accessed buildings
- Emergency Department and Urgent Treatment Centre

FLOOR 0	
ZONE A	
Audiology (Outpatients)	A8
Bournemouth Research Hub	A10
Cataract Clinic (Eye Unit)	A2
Clinical Site Management Team	A17
Departure Lounge (Outpatients)	A8
Diabetes and Endocrine Centre (Outpatients)	A8
ECG (Outpatients)	A6
Emergency Gynae Assessment Unit	A10
Endoscopy	A13
Eye Emergency Unit (Eye Unit)	A2
Eye Outpatients (Eye Unit)	A2
Haematology and Oncology Day Unit	A3
MRI and CT Department	A20
Oral and Maxillofacial	A10
Orthodontics	A10
Orthopaedic Outpatients	A12
Orthoptic Department (Eye Unit)	A2
Outpatients	A6
Pharmacy (Boots)	A14
Plebotomy (Outpatients)	A6
Pre-Operative Assessment (Outpatients)	A8
Respiratory	A16
The Derwent corridor	A5
Vascular Suite (Outpatients)	A6
Ward A13 Left	A13
Ward A11 Right	A11
Ward A11 Left	A11
Ward A9 Right	A9
Ward A9 Left	A9
West Entrance	A1
X-Ray and Ultrasound Department	A19
ZONE B	
Atrium	B6
Chaplaincy	B3
Charity	B5
Main Entrance Reception	B1
Patient Advice and Liaison Service (PALS)	B2
Voluntary Services	B4
ZONE C	
Acute Medical Unit	C8
Bereavement Services	C14
Clinical Engineering	C11
Dorset Prosthetic Centre	C12
Goods-in	C16
Interventional Radiology	C5
Lakeside	C7
Medical Examiners	C16
Medical Photography	C11
Medical Same Day Emergency Care	C10
Neurovascular Same Day Emergency Care	C10
Portering and Security	C1
Staff Restaurant	C11
Stroke Unit	C9

EXTERNAL BUILDINGS	
Community Midwifery Hub	Building 12
The Derwent	Building 20
Renal Unit	Building 21

April 2026



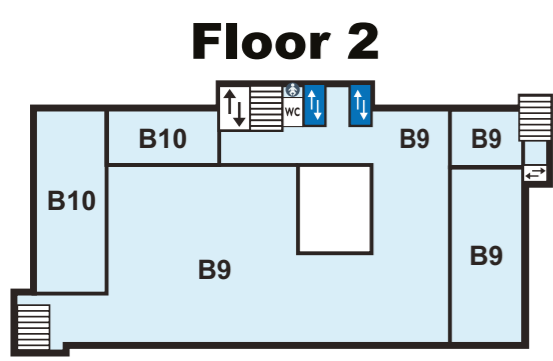
Floor 1

FLOOR 1	
ZONE A	
Breast and Sarcoma Service	A23
Cancer Care Oncology	A25
Cancer Same Day Emergency Care	A25
Day Theatres	A24
Early Pregnancy Unit	A23
Emergency Surgical Admissions Unit	A32
Eye Day Ward (Eye Unit)	A22
Eye Theatres (Eye Unit)	A22
Eye Ward (Eye Unit)	A22
Gynaecology Outpatients	A23
Main Theatres	A39
Surgical Same Day Emergency Care	A36
Ward A31 Left	A31
Ward A31 Right	A31
Ward A29 Left	A29
Ward A29 Right	A29
Ward A27 Left	A27
Ward A27 Right	A27
Ward A26 Right	A26
Ward A26 Left	A26
Ward A28 Right	A28
Ward A28 Left	A28
Ward A30 Right	A30
Ward A30 Left	A30
ZONE B	
Antenatal and Maternity Ultrasound	B8
Critical Care Unit	B7
ZONE C	
Cardiac Intervention Unit	C26
Cardiac Physiology	C23
Coronary Care Unit	C23
Dorset Heart Clinic	C26
Older Persons Services Same Day Emergency Care	C23
Ward C25 Left	C25
Ward C25 Right	C25
Ward C24 Left	C24
Ward C24 Right	C24
Ward C22 Left	C22
Ward C22 Right	C22

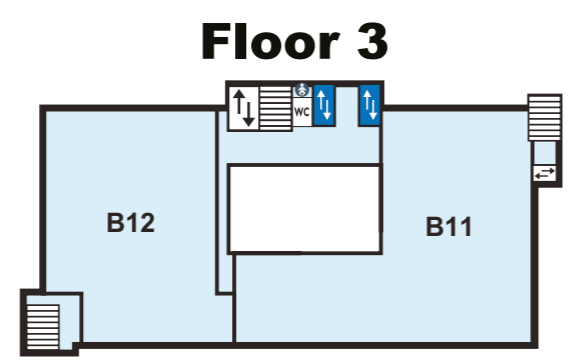
FLOOR 2	
ZONE B	
Aspen Induction Ward (Maternity)	B9
Haven Birthing Suite (Maternity)	B9
Maternity Triage	B10
Spring	B9
Willow Antenatal Ward	B10
Woodland Labour Ward (Maternity)	B9

FLOOR 3	
ZONE B	
Acorn Transitional Care	B11
Mulberry Postnatal Ward	B11
Neonatal Intensive Care Unit	B12

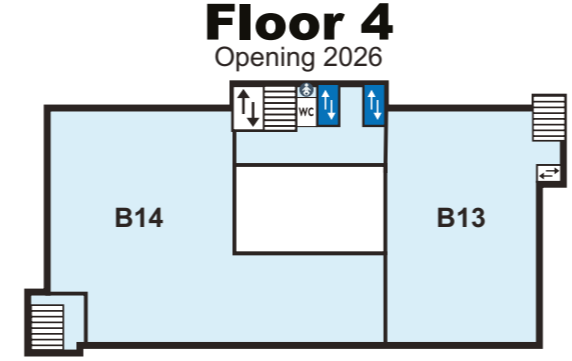
FLOOR 4	
ZONE B	
Opening 2026	B13
Opening 2026	B14



Floor 2



Floor 3



Floor 4
Opening 2026