

Transforming Care Together:

Better for patients, better for staff



A £500m investment in our hospital sites ensuring our patients receive the right care, in the right place, at the right time



Better for patients, better for staff

Spring 2024

Fast Facts

- **£500m invested in local health services**
- **New top-class patient facilities**
- **Royal Bournemouth Hospital as a major emergency centre - faster, better specialist emergency care when you need it**
- **Poole Hospital becomes the biggest major planned care centre in the UK - reducing waiting times**
- **Investment across our sites, in community services, access, and travel**
- **On track with carbon reduction and UHD Green Plan**
- **Already delivering transformation benefits, with more up to 2026**



“Thanks to our public and partners support, we’re certain our ambitious plans for our hospitals will make a real difference to the population we serve. The changes are already underway. Taken together, they will improve healthcare for patients and the wider community, creating a great place to work for our staff for years to come.”

Siobhan Harrington, chief executive

Transforming Royal Bournemouth Hospital



Focusing on emergency care at Royal Bournemouth Hospital will mean emergency cases will be centered on the site with increased consultant and specialist team cover, seven days a week. This will reduce numbers of patients transferring between hospitals, put less demand on ambulances and hospital services, and so achieve better outcomes for patients.

The BEACH Building - 22,650m² of modern patient care

Described as a ‘once in a generation opportunity’, the new 6-storey high BEACH building (standing for Births, Emergency And Critical care, children’s Health) will have an enhanced emergency department, new purpose-built maternity, and children’s unit as well as a larger critical care facility.

- new critical care unit with more space for patients and the teams caring for them, including access to outside space
- large maternity unit with birthing pools and single postnatal care rooms for new mums and their partners
- 150,000 emergency and urgent care patients seen quicker, including dedicated CT scanner
- new energy centre and net zero carbon design



“At the heart of our plans is a necessity to improve the flow of emergency patients throughout our hospitals and most importantly, to provide patients with a better experience whilst under our care.”

Dr Harry Adlington, emergency medicine consultant and clinical director for emergency and urgent care

Dorset Pathology Hub

Designed for fast, accurate, routine and specialist testing, the Hub improves diagnostics for patients, helps meet the growing demand for specialist treatment as well as providing development opportunities for staff. The Hub is part of the One Dorset Pathology network - a collaborative partnership between Dorset County Hospital and UHD.



- processing over 9 million tests per year
- diagnosing conditions in over 70% of all patients seen by the NHS.
- 200 staff - offering 24/7 365 days a year support
- a green building with a BREEAM (Building Research Establishment Environmental Assessment Method) 'excellent' rating.



What we say:

“The Dorset Pathology Hub has the very latest in specialist technology and so delivers better value, high quality diagnostic and care for patients across the region.”

Stephen Harding, head of service for One Dorset Pathology

New ward and catering facilities

A brand-new ward block is planned, with additional beds, improved catering facilities, and enhanced facilities for staff.

- 110 additional beds over four levels of ward accommodation - supporting respiratory and gastroenterology
- new catering facility on the ground floor
- links to the existing hospital 'street' at both the ground and first floor level
- plant space and solar panels on the roof



What we say:

“Patients will benefit from new ward spaces, with the majority being single rooms as well as bariatric facilities on each level.

“We will also benefit with new catering facilities, as well as additional staff changing and shower services.”

Dr Robin O’Gorman, medicines care group medical director



Transforming Poole Hospital



Bringing together planned care on the Poole Hospital site will provide rapid treatment of elective operations. These are without the disruption or delay that can occur from high volumes of emergency cases having to take precedence. Thousands of patients each year will benefit from shorter waiting times.

State-of-the-art theatre complex

An extension to the existing hospital site comprising of a purpose-built five storey tower. Opened by patient Julie Hills in July 2023, it incorporates a four-table 'barn' theatre, where the main surgical area is large and open-plan. This is one of the first facilities in the UK, with each patient treated in a dedicated space with an ultraclean air canopy over each station. The completion of this project will see major investment at Poole with:

- 6,000 planned care patients seeing shorter waiting times
- 10 new state-of-the-art operating theatres
- major refurbishment of wards and facilities to create improved surgical 'flow'
- wider range of surgical procedures available, including a surgical robot and Enhanced Post Operative Care (EPOC)



What we say:

“Separating planned and emergency care means there will be shorter wait times and fewer cancellations for planned procedures.”

Dr Isabel Smith, consultant anaesthetist and medical director for strategy and transformation

Urgent Treatment Centre (24/7)

The Urgent Treatment Centre will remain on the Poole site and will continue to provide timely access to urgent care for patients with minor injuries or minor illness. This will ease the pressure on the Emergency Department at the Royal Bournemouth, freeing up the team there to treat the more unwell patients, most of whom will arrive by ambulance. The Poole UTC will be:

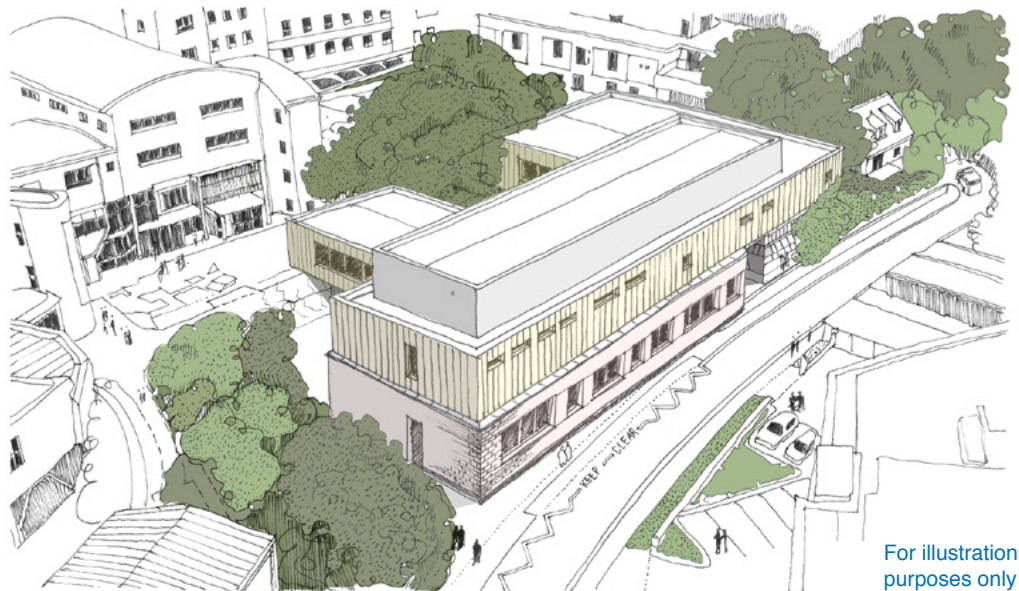
- there if 111 phone or online books you in, or if you walk in, as you can now
- treating nearly 800 different types of minor illness and injuries - including fractures, cuts, abdominal pain and scalds/burns.
- staffed by specialised nurse practitioners and GP's, 24/7, 365 days a year.

What we say:



“Our teams will be on hand to offer medical help when it’s not a life-threatening emergency, allowing everyone to receive the right care, in the right place, at the right time.”

Dr David Broadley, medical director for integrated care



For illustration purposes only

Expanding our endoscopy service

Endoscopy allows diagnosis and treatment using tubes with cameras, allowing early detection of cancers and other diseases. The new facility will house six procedure rooms with the opportunity for future expansion as a training centre. The £21m development is central to Dorset’s long-term vision for the Community Diagnostic Centres Programme (CDC), providing a ‘hub and spoke’ model for elective diagnostics

What we say:



“It’s really exciting to look forward to our new centre which will enable us to see and treat more people, reduce waiting times, improve people’s experiences and train the next generation of endoscopy staff for Dorset.”

Dr Suranga Dharmasiri, consultant gastroenterologist and the Dorset lead for endoscopy

Cancer care services

Cancer outpatient services will continue to run from Poole Hospital. There will still be oncology and haematology outpatient clinics and chemotherapy clinics running as they do now. The radiotherapy department is also remaining at the Poole site and Robert White Centre at Dorset County Hospital with linear accelerators used for cancer treatments. The department will continue to be providing the full range of radiotherapy and brachytherapy planning and treatments as it does currently.



Key worker housing

With the maternity services moving into the BEACH in Royal Bournemouth Hospital, there is potential to convert the St Mary's site into key worker housing, improving support to new staff and staff from overseas coming to work in the local NHS. Developing this site to meet the need for housing for NHS staff is an excellent opportunity to attract and retain staff. We will also look to expand key worker housing on other sites, including at RBH, so staff can walk to work.

Clinical and rehabilitation services

Poole Hospital will also offer a diverse range of surgical specialties, including orthopaedics, urology, breast, including lower gastro-intestinal and dermatology procedures. Specialist rehabilitation will also be centred at Poole.

Treatment Investigation Unit (TIU)

All TIU services at UHD are being centralised at Poole Hospital. This strategic move is part of our commitment to enhancing services and optimising patient care. Consolidating our TIU services at Poole Hospital is designed to streamline access to care - with the entire TIU team available to support patients seamlessly throughout their treatment..

Endoscopy

Endoscopy services will continue to run at both Poole Hospital and the Royal Bournemouth Hospital site, as they do at present.

Gynaecology

A £1m investment programme has provided a complete renovation of our harbourside ambulatory gynaecology centre. This dedicated unit affords expert gynaecology services in a purpose-built centre, providing patients with faster access to treatment and an improved experience.

Other services on site

Poole's front entrance area continues to provide better space for patients, visitors and staff, including a patient information area and Changing Places toilet - helping people with limited mobility to use the toilet comfortably or get changed privately.





Christchurch Hospital

Christchurch Hospital continues to offer specialist palliative, rehabilitation and various outpatient and diagnostic services. Recent investment in extra physio facilities have been put to good use, with our 'mass clinics' featuring in BBC news coverage.

Offsite outpatients and support services

The sterile services team at Alderney Hospital ensures our medical/surgical supplies continue to meet high standards. Other sites including Yeoman's Way and Canford House, are providing flexible office hubs for valuable support services. We also run an outpatient assessment clinic from Beales Department store in the Dolphin Centre in Poole - strategically located to support patients with additional clinical services.

Access and travel

We know that hospitals can be large and confusing places to visit. We also know that we see some of the most vulnerable people in society. That is why we are reviewing all our 'wayfinding', including signs, maps, appointment letters and technology, starting at RBH as this site is changing the most.

We are aware that our hospitals are situated in one of the UK's most congested areas, so we are pioneering efforts to alleviate traffic congestion. We support alternatives to single-occupancy car journeys, promoting eco-friendly options like bus services, cycle lanes, and lift sharing for staff.

At RBH, we are improving road layouts, prioritising cycle access and easier drop-offs for pedestrians and bus travellers. We are also collaborating with local partners to enhance transportation options. We already have a direct bus service between sites (M1), with options being scoped for an express bus service between the Royal Bournemouth and Poole hospitals from 2025.

Finally, car parking facilities are being revamped to improve the experience for everyone. Planning permission has been granted for a 970-space multistorey car park at RBH. From late 2024, the new link road from Wessex Way will open, improving access for staff, deliveries and ambulances.



Sustainability

Our goal is minimising the environmental impact of our estate. We are aiming to attain a BREEAM “Very Good” rating or higher for ongoing projects - on track with our path to having ‘net zero’ carbon emissions by 2040. Our commitment to sustainability is evident in the development of comprehensive sustainability approaches.

Why all these changes?

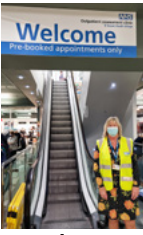
Following the Dorset Clinical Services Review, plans were approved to reform local health services in 2019. Over 10,000 hours of NHS staff time were invested into developing these plans for our future, with the input of doctors, nurses, allied health professionals and many others.

These care the biggest changes in healthcare in Dorset since the late 1980s. They have already started, with benefits already being felt by patients and staff, including.

- Better food. New kitchens and a whole new way of producing food is already in place at RBH. This means more choice, better quality control and healthier ingredients. All made on site.
- Barn theatre. Best ever times from broken hip to replacement, with Poole staff reporting a much better working environment
- Digital transformation. Better systems for booking appointments, for sharing scan images and in the use of AI for pathology. With the Electronic Health Record on course for 2026, we are speeding up care and improving quality.
- One team. More and more staff are working across our sites, to ensure we have the right people, in the right place to maintain services.

Timeline

Already achieved



Outpatient assessment clinic at Beales, Dolphin Centre, Poole. Breast cancer screening times cut, easier access to patient clinics

Cardiology and stroke

Patients are now receiving time critical, lifesaving treatment sooner, with patients from Poole and Purbeck areas being treated in approximately one third of the time compared to before the changes, meeting national targets



Poole 'barn' theatre open



The BEACH building 'topping out' ceremony with Lord Markham, CBE, Minister for Health



New ward catering at RBH



Dorset Pathology Hub open

Looking ahead*

- June 2024:** Haematology team moves to RBH
Treatment Investigation Unit (TIU) moves to Poole
- Summer 2024:** RBH new ward block construction begins
- March 2025:** RBH based critical care team move into the BEACH
- April 2025:** RBH new main entrance and shops open
Maternity team moves into the BEACH
- Summer 2025:** Endoscopy diagnostic hub at Poole opens
- Autumn 2025:** Surgical Same Day Emergency care (SDEC) completed
New haematology and oncology wards
- Winter 2025:** Emergency services move to RBH, Poole becomes planned care hospital
New RBH ward block completed, new catering facilities open
- Summer 2026:** Enhanced Post-Operative Care Unit (EPOC) open, Urgent Treatment Centre at Poole, Acute Medical Unit (AMU) and Rapid Access Consultation and Evaluation Unit (RACE) at RBH
- October 2026:** Children's outpatients move to RBH
- January-March 2027:** Full-service reconfiguration complete

* these are approximate times and subject to change

Back the BEACH Appeal to help transform care across Dorset

The NHS is funded to provide the majority of the plans set out here. However, many of the ‘above and beyond’ items are not covered. Often, these can make all the difference between technically good care, and a positive heart-warming experience. This is where we need your help.



University Hospitals Dorset NHS Charity has launched a £1.5m fundraising appeal to take the Royal Bournemouth Hospital into the future. The BEACH Appeal is one of the charity’s biggest ever fundraising appeal to provide additional items for the new six-storey building at the Royal Bournemouth Hospital to help transform healthcare across Dorset.

One of many fundraising items includes an additional state-of-the-art CT scanner to enable double the number of patients to be scanned, diagnosed and treated within critical timeframes. Funds will go towards new wellbeing gardens adjacent to the new Critical Care Unit to provide a tranquil outdoor space for patients, visitors and staff. And, new indoor and outdoor play areas in the new children’s health department to give children joy and a break away from clinical areas. Artwork throughout the building will also require charity funding - there are some great, large ‘blank canvas’ opportunities.

Head of Charity, **Debbie Anderson** said:



“The BEACH Appeal really is a once-in-a generation opportunity for us all to be a part of something special by helping to transform care together for everybody across Dorset.”

To support the investment in where you live and your local hospitals, go to uhdcharity.org/beachappeal for more information.



For more information visit the
University Hospitals Dorset NHS Foundation Trust
website and look for the
'Transforming Care Together' portal:
www.uhd.nhs.uk



Email:

communications@uhd.nhs.uk

Information provided by:
University Hospitals Dorset NHS Foundation Trust

Poole Hospital

Longfleet Road

Poole

Dorset

BH15 2JB

t: **01202 665511**

Royal Bournemouth Hospital

Castle Lane East

Bournemouth

BH7 7DW

t: **01202 303626**

Christchurch Hospital

Fairmile Road

Christchurch

BH23 2JX

t: **01202 486361**



Better for patients, better for staff