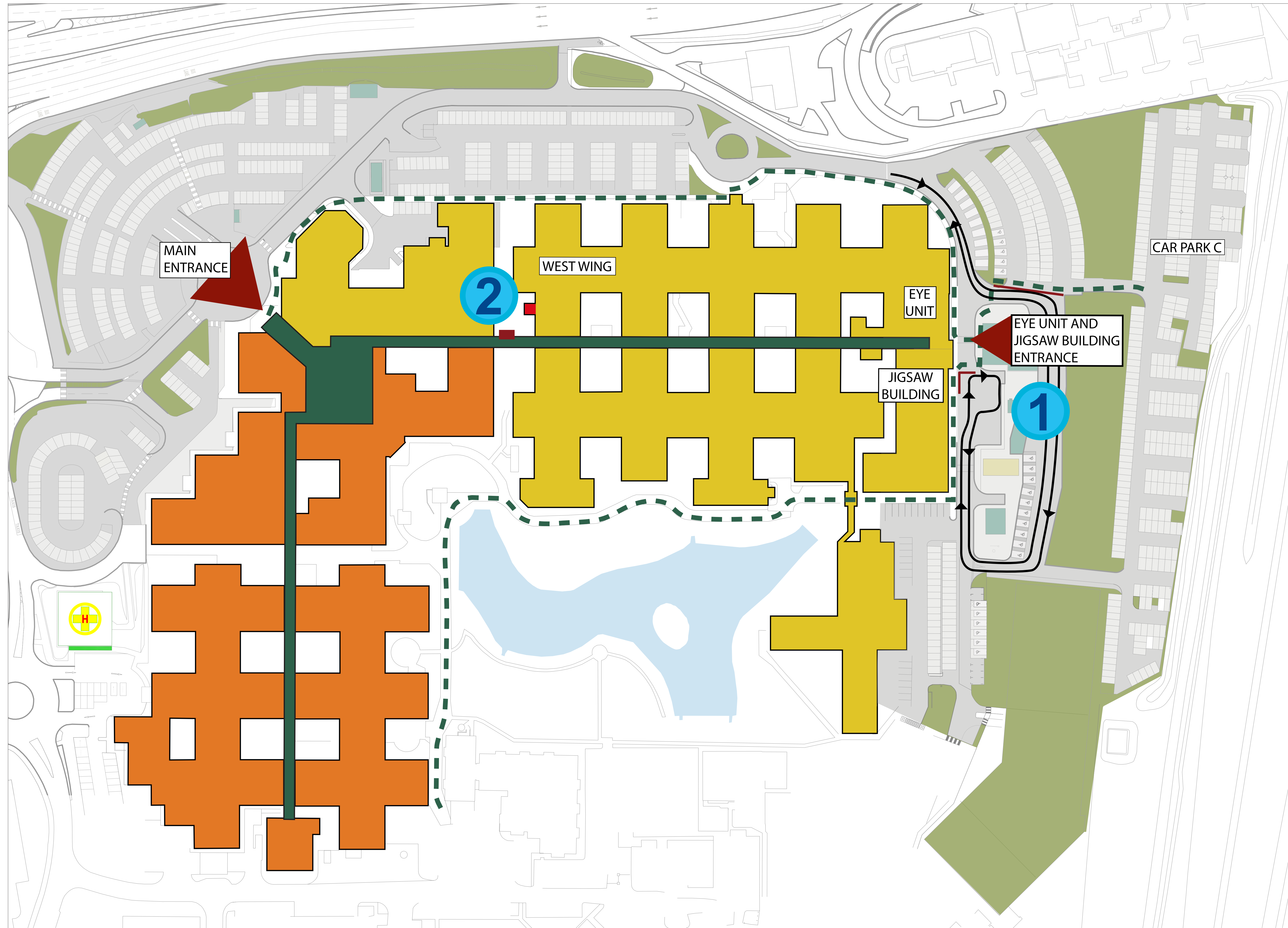


Orthopaedic, Eye Unit and Jigsaw Building



1 Improvements to the Eye Unit and Jigsaw Building Entrance

- to deliver a refurbished entrance, including a new reception and waiting area and a 'grab-and-go' refreshment facility
- start on site 1st February 2021
- entry to the hospital street will be accessible throughout the duration of the project
- project amends vehicle access route to include a new route past the west entrance
- project due to complete August 2021

2 External access to Orthopaedics closes

- to deliver a brand new retail pharmacy and new patients' affairs accommodation
- orthopaedic outpatients will only be accessible from the hospital street between February and June 2021
- project due to complete early August 2021

