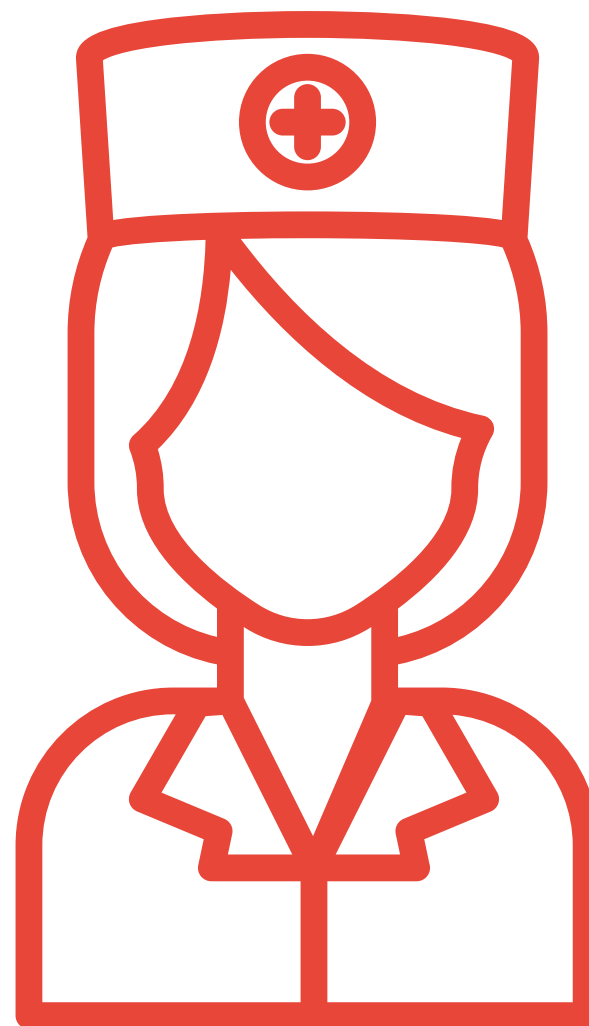
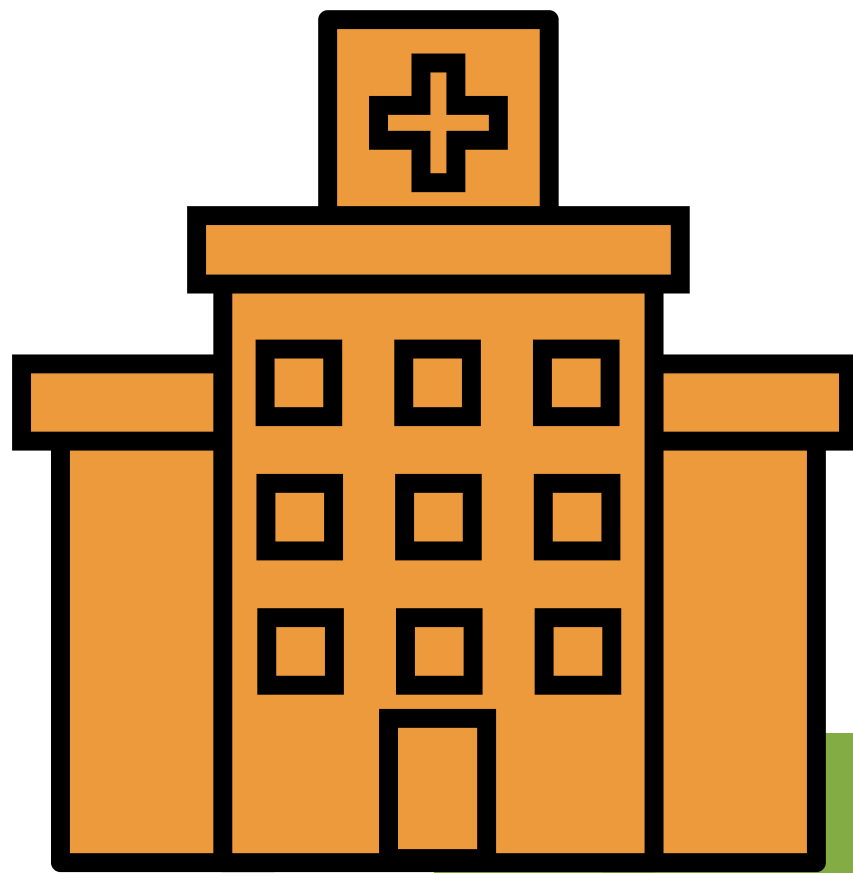




# Cross Site Clinical Skills

## (Venepuncture, Cannulation & IV Therapy)

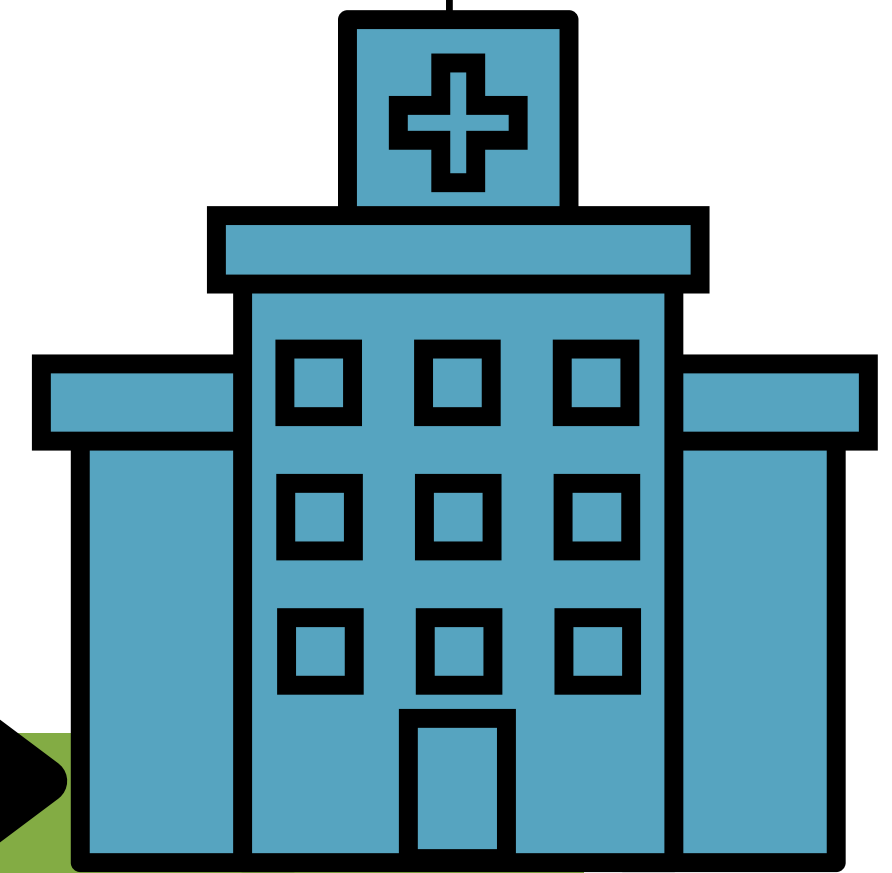
Poole Hospital



NHS

University Hospitals Dorset  
NHS Foundation Trust

Bournemouth &  
Christchurch  
Hospital



**Whilst we are aligning our policies/procedures, training and competencies, if you need to use the following skills (Venepuncture, Cannulation & IV Therapy) cross site, please refer to these slides for key points.**

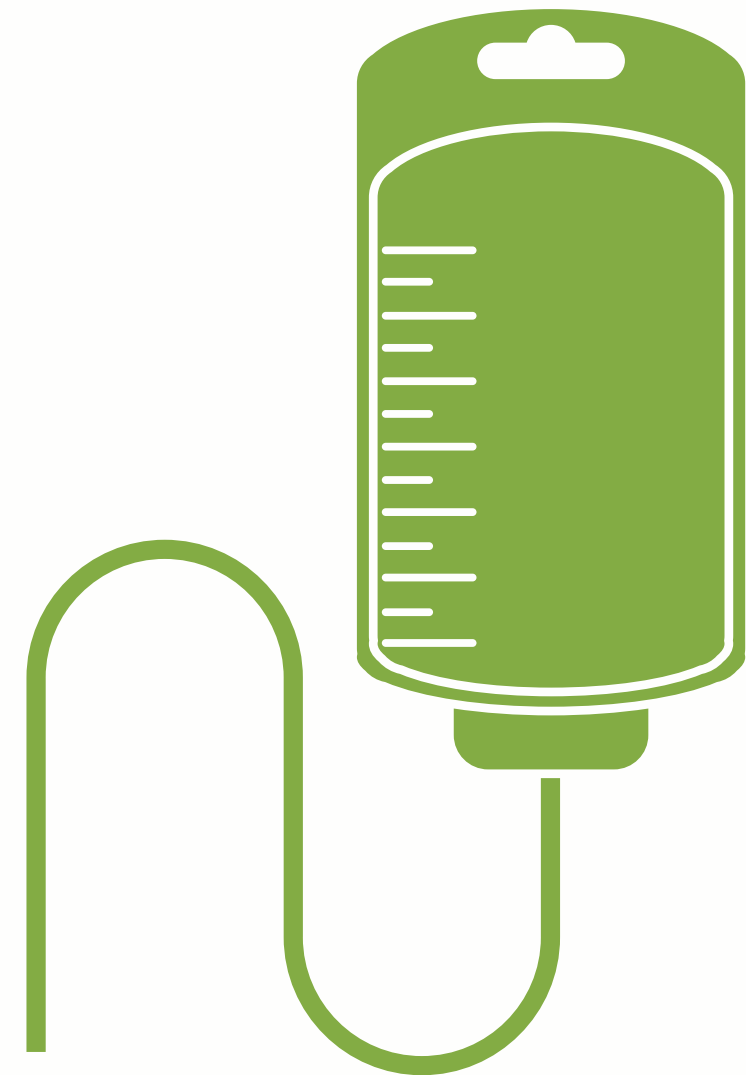
- Familiarise yourself with the relevant local policies, procedures/SOPs on the intranet pages**
- You must ensure you have an in-date competency, work within your job role description and scope of practice**



# Administration of IV Therapy

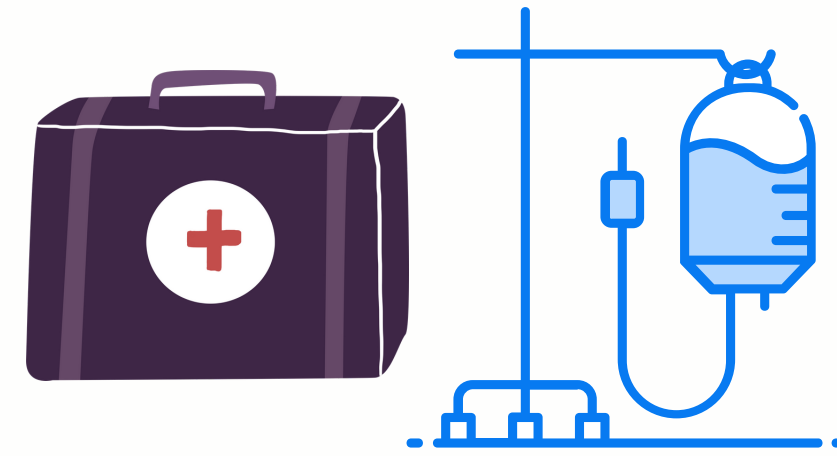


**Please look at the questions on the following pages and discover the answers for each site.....**



1

# Does Equipment Differ?



Intravenous pumps are the SAME

Poole

Bournemouth & Christchurch



Gravity set

CareFusion  
Infusion Set



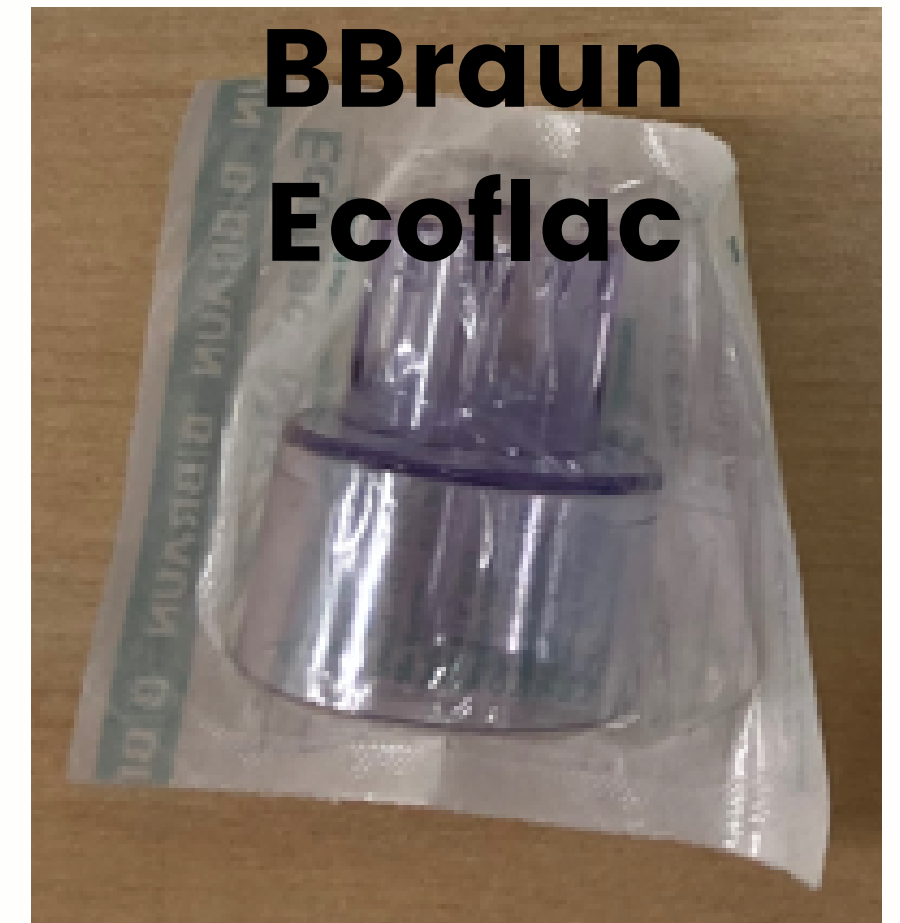
BBraun  
Ecoflac

Connect



Gravity set

BBraun  
Intrafix SafeSet



BBraun  
Ecoflac

Mix



# Do We Sign for the Saline Flush?



## Poole

- **Not required on EPMA**

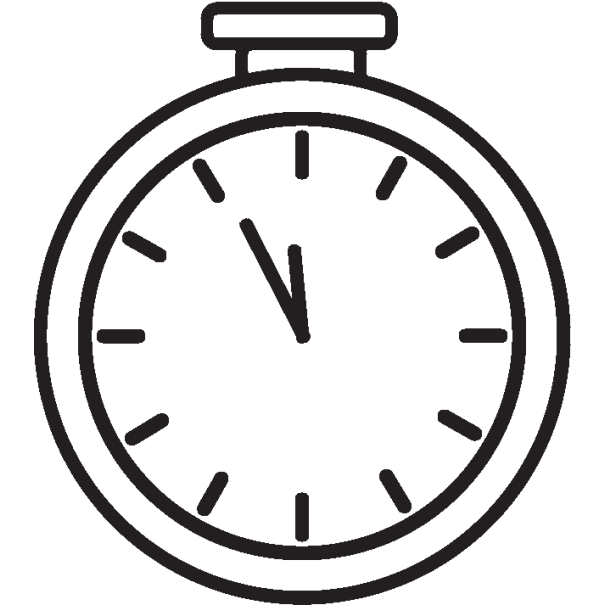


## Bournemouth & Christchurch

- **Required on current paper prescription chart**
- **Note:** this will not be required when EPMA replaces chart.



## What is the Dwell Time for a Cannula?



### Poole

- **Up to 2 weeks**
- **Note:** Dressings must be changed once a week minimum. Cannulas in situ for more than 96hrs must be flushed every 8hrs.

### Bournemouth & Christchurch

- **Up to 72 hours**
- **Note:** Cannulas can remain in situ for an extra 24hrs if the VIP score is zero and it has been risk assessed.

**Did you know? If the cannula is suspected to be infected, Poole send the tip of it to Microbiology**

4

## Do I Require Additional Transfusion Training?

**Transfusion practice across UHD is currently very different. Hospital site training, eLearning and competence is REQUIRED.**

**Please refer to the intranet transfusion pages for more details**

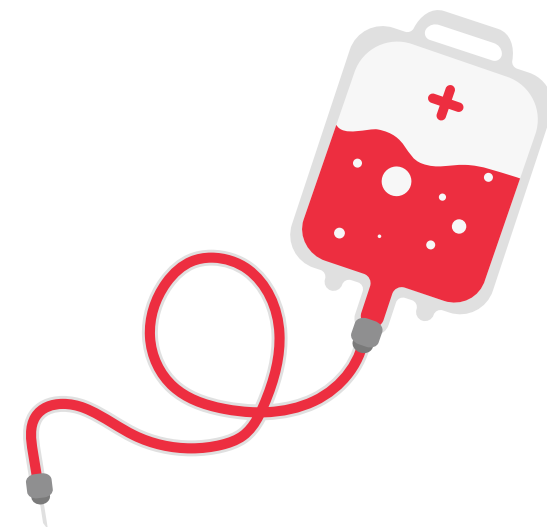
### Poole

<https://intranet.poole.nhs.uk/index.php/pathology/transfusion/mandatory-blood-transfusion-training>



### Bournemouth & Christchurch

<https://intranet.rbch.nhs.uk/index.php/transfusion>



# Venepuncture

**Please look at the questions on the following pages and discover the answers for each site....**





1

# Does the Equipment Differ?

## Poole



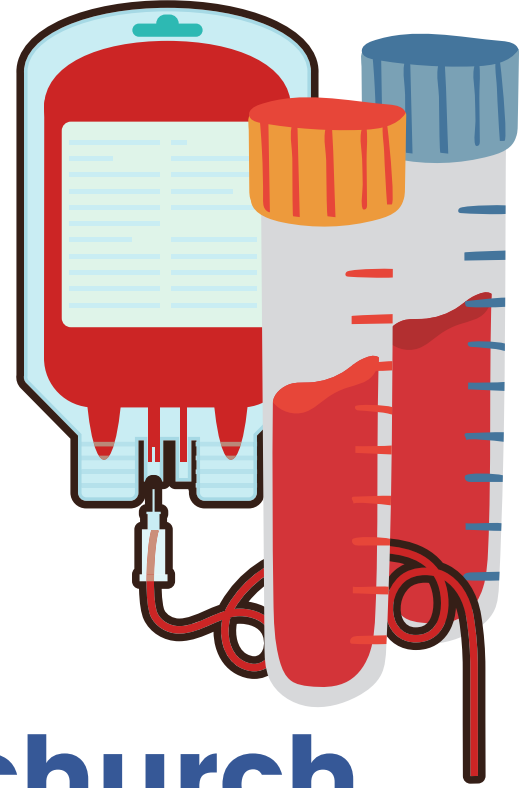
**Blood Transfer unit**  
**NOTE - CONTAINS**  
**LATEX**

## Bournemouth & Christchurch





# How Does Labelling of Blood Tubes Differ?



## Poole

**Sample for blood transfusions MUST be handwritten**

**Other blood bottles – ICE labels, mini ID labels or handwritten**

**NOTE – must complete 'Taking a venous sample' competency form**

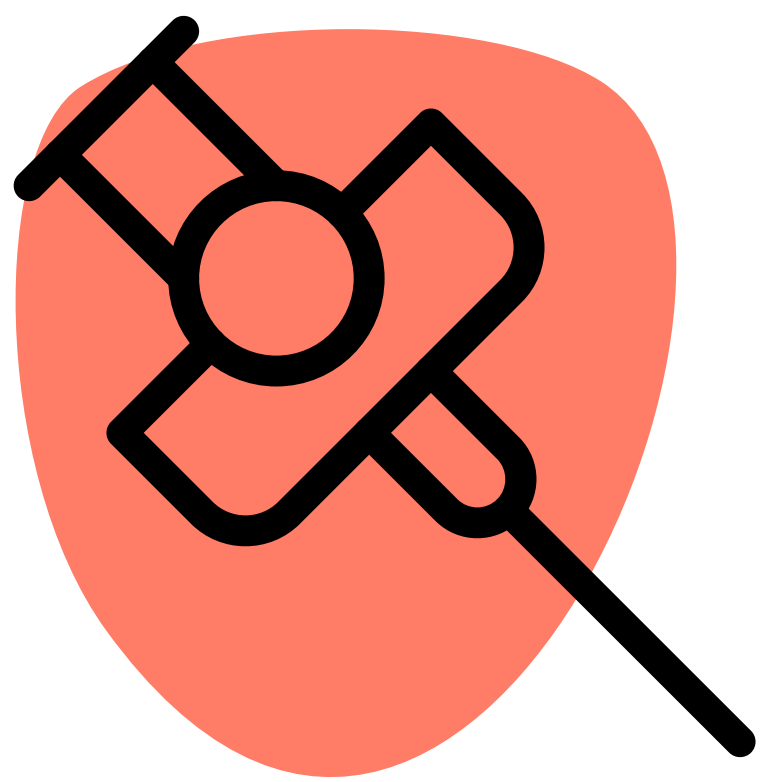
## Bournemouth & Christchurch

**Sample for blood transfusions can be labelled with PDA or handwritten**

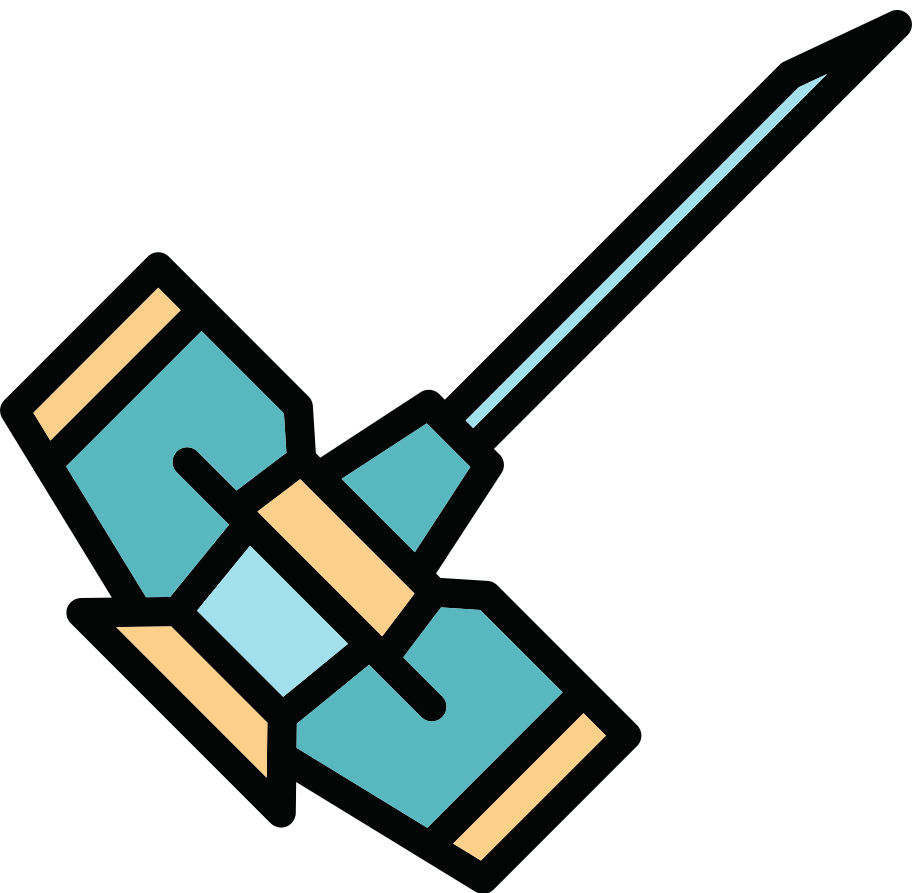
**Other blood bottles –PDA, ICE labels or handwritten**

**NOTE – must complete 'D – Sampling Core Competencies' form**

# Cannulation



**Please look at the questions on the following pages and discover the answers for each site.....**





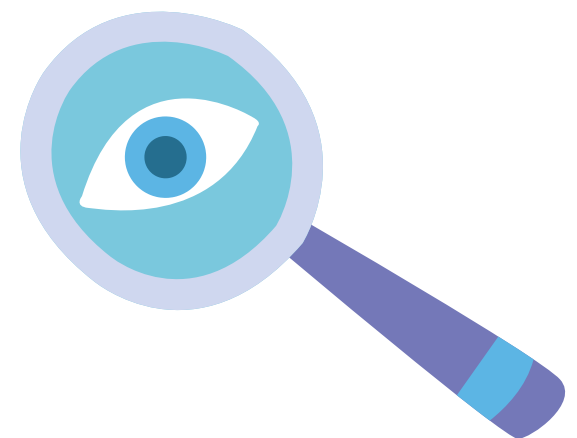
- a) How Often Should We Inspect the VIP Score and**
- b) Do We Document VIP Score 24hours Post Removal?**

## **Poole**

- a) Minimum of twice a day**
- b) Yes, there is a section for this on the VIP chart**

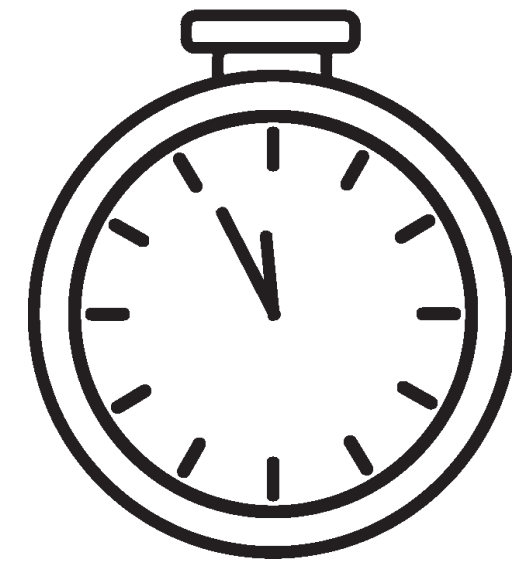
## **Bournemouth & Christchurch**

- a) Minimum of three times a day**
- b) This is not seen on VIP charts here, but it is good practice**





## What is the Dwell Time for a Cannula?



### Poole

- **Up to 2 weeks**
- **Note:** Dressings must be changed once a week minimum. Cannulas in situ for more than 96hrs must be flushed every 8hrs.

### Bournemouth & Christchurch

- **Up to 72 hours**
- **Note:** Cannulas can remain in situ for an extra 24hrs if the VIP score is zero and it has been risk assessed.

**Did you know? If the cannula is suspected to be infected, Poole send the tip of it to Microbiology**



# Do We Sign for the Saline Flush?

## Poole

- **Not required on EPMA**

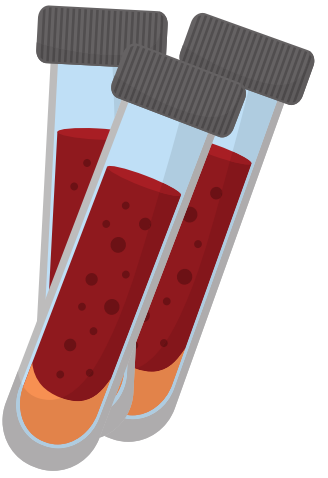


## Bournemouth & Christchurch

- **Required on current paper prescription chart**
- **Note:** this will not be required when EPMA replaces chart.



## Are Bloods Taken From a Cannula?



### Poole

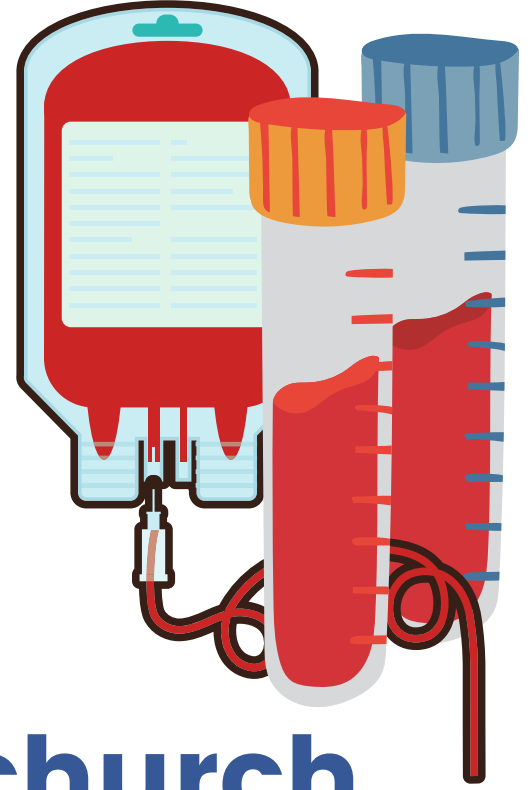
- **Further venepuncture training is required to take bloods on cannulation**
- **Blood cultures are not taken from cannulas here**

### Bournemouth & Christchurch

- **Cannulation training here covers you to take bloods on cannulation**
- **Blood cultures are taken from cannulas here**



## How Does Labelling of Blood Tubes Differ?



### Poole

**Sample for blood transfusions MUST be handwritten**

**Other blood bottles – ICE labels, mini ID labels or handwritten**

**NOTE – must complete 'Taking a venous sample' competency form**

### Bournemouth & Christchurch

**Sample for blood transfusions can be labelled with PDA or handwritten**

**Other blood bottles –PDA, ICE labels or handwritten**

**NOTE – must complete 'D – Sampling Core Competencies' form**



6

# Does the Equipment Differ?

**Poole**



**Vacuette Holdex**  
**NOTE - CONTAINS**  
**LATEX**

**Bournemouth & Christchurch**



**These two pieces**  
**come separate**

## Further Information



**For ECG recording, Non-IV Administration and Urinary Catheterisation, you must ensure you have read the relevant policies for each site, have an in-date competency and familiarise yourself with equipment.**

**NOTE - CVADs are site-specific and separate training is required for each site at present.**

Please send any queries to [clinical.skills@uhd.nhs.uk](mailto:clinical.skills@uhd.nhs.uk)

Thank you