

Traffic disruption at Royal Bournemouth Site (October 2024)

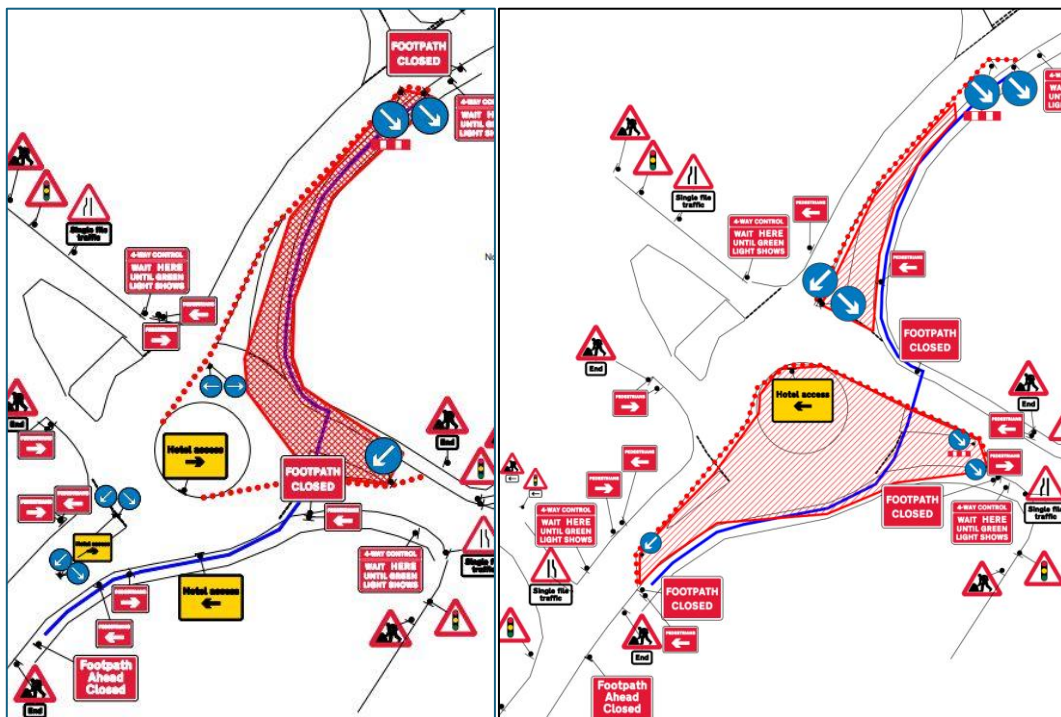
Q&A

Q: When do the roadworks start, and how long will they last?

A: The roadworks will begin on Monday, 7 October and are expected to last 2-3 weeks.

Q: Where will the roadworks take place?

A: The roadworks will affect Deansleigh Road roundabout for The Village Hotel entrance, near the Bournemouth site. See site maps for the two phases of work



Q: Why is the work being carried out?

A: The Village Hotel are installing electric vehicle chargers in their car park and require the electrical supply from the road. This work is not to do with our building work.

Q: Will there be traffic management in place?

A: Yes, temporary traffic lights will be in place for approximately two weeks to manage the carriageway crossing near the Village. These lights will be managed by the contractor from 7am-7pm, after these times, it will be automatic.

Q: How will this affect staff commuting and visitors accessing the site?

A: There will be heavy traffic during peak hours (7-9am & 3:30-6pm). We expect around 1500 staff to be arriving and leaving during these times, so we advise allowing extra

travel time. If possible, staff are encouraged to reduce car journeys or seek alternative modes of travel to the Royal Bournemouth site during this period.

Q: What are the peak times to avoid?

A: The busiest times will be 7-9am and 3:30-6pm, when staff are arriving for and leaving their shifts. Try to avoid traveling during these periods if possible.

Q: Will the ED entrance be affected by the roadworks?

A: No, the ED entrance will remain open, and blue light ambulances will have uninterrupted access.

Q: Is there anything I can do to avoid delays?

A: If possible, staff should consider carpooling, using public transport, or adjusting their travel times to avoid peak hours. Reducing car journeys to the site will help ease congestion.

Q: How can I stay updated on any changes?

A: Stay tuned to our communication channels and social media for the latest updates on the roadworks and traffic conditions.

V1 (website) 02.10.24