

University Hospitals Dorset
NHS Foundation Trust

Royal Bournemouth Hospital site plan



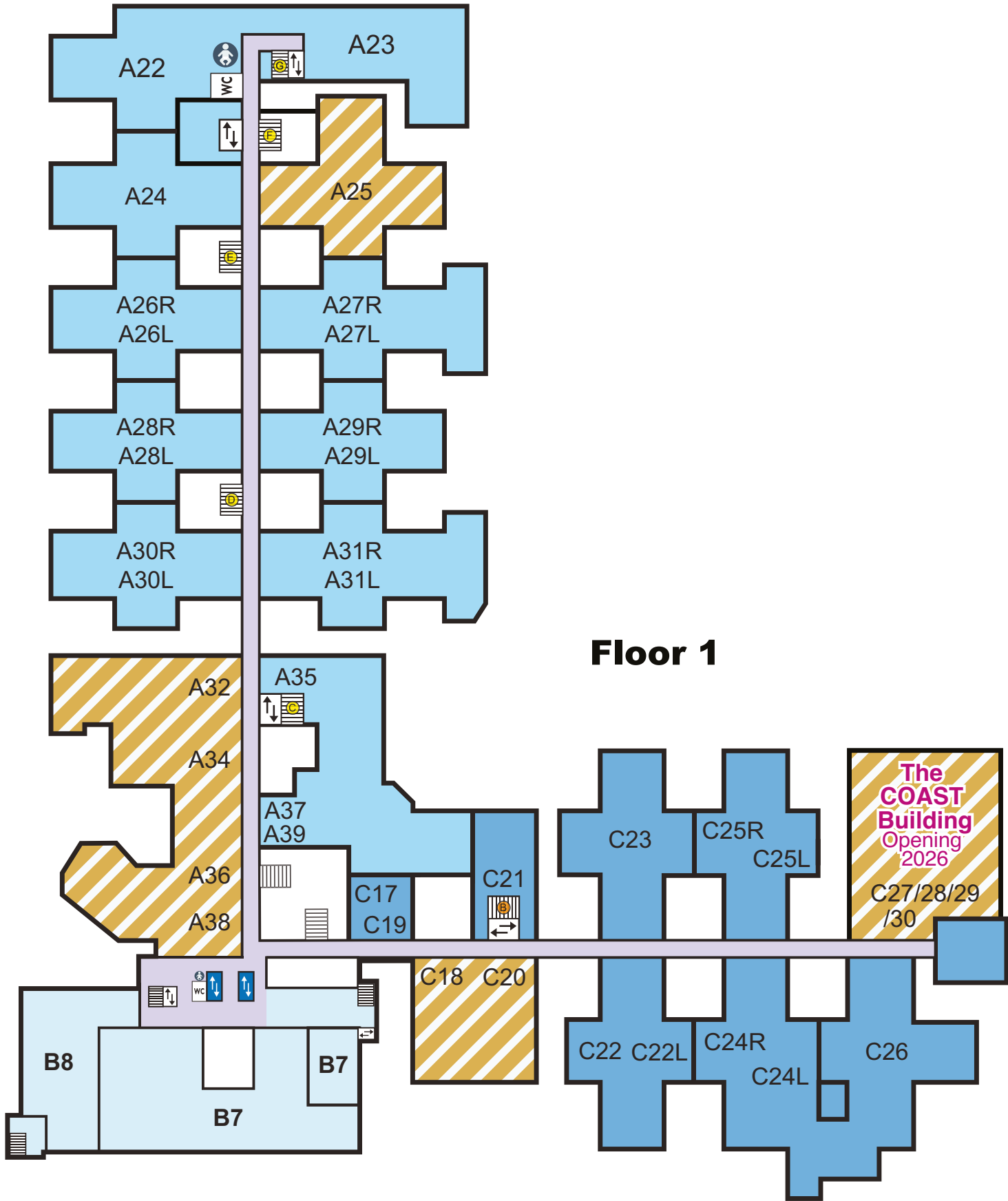
Key

- Link corridors
- Stairs
- Lifts
- Staff lifts
- Baby change
- Coffee Shop
- Staff (only) Restaurant
- Shop
- Toilets
- Disabled toilets
- Pharmacy
- Helicopter pad
- Public telephone
- Car parking for patients and visitors
- Disabled car parking
- Staff car parking
- Bus Hub
- Drop off point
- Bike hoops
- Building works
- Zone A
- Zone B
- Zone C
- Externally accessed buildings
- Emergency Department and Urgent Treatment Centre

December 2025

EXTERNAL BUILDINGS	
Community Midwifery Hub	Building 12
The Derwent	Building 20
Renal Unit	Building 21

FLOOR 0	
ZONE A	
Audiology (Outpatients)	A8
Bereavement Services	A12
Bournemouth Research Hub	A10
Cataract Clinic (Eye Unit)	A2
Clinical Site Management Team	A17
Departure Lounge (Outpatients)	A8
Diabetes and Endocrine Centre (Outpatients)	A8
ECG (Outpatients)	A6
Emergency Gynae Assessment Unit	A10
Endoscopy	A13
Eye Emergency Unit (Eye Unit)	A2
Eye Outpatients (Eye Unit)	A2
Haematology and Oncology Day Unit	A3
MRI and CT Department	A20
Oral and Maxillofacial	A10
Orthodontics	A10
Orthopaedic Outpatients	A12
Orthoptic Department (Eye Unit)	A2
Outpatients	A6
Pharmacy (Boots)	A14
Phlebotomy (Outpatients)	A6
Pre-Operative Assessment (Outpatients)	A8
Respiratory	A16
The Derwent corridor	A5
Vascular Suite (Outpatients)	A6
Ward 1	A13
Ward 2	A11
Ward 3	A11
Ward 4	A9
Ward 5	A9
West Entrance	A1
X-Ray and Ultrasound Department	A19
ZONE B	
Atrium	B6
Chaplaincy	B3
Charity	B5
Main Entrance Reception	B1
Patient Advice and Liaison Service (PALS)	B2
Voluntary Services	B4
ZONE C	
Acute Medical Unit	C8
Clinical Engineering	C11
Dorset Prosthetic Centre	C12
Goods-in	C16
Interventional Radiology	C5
Lakeside	C7
Medical Examiners	C16
Medical Photography	C11
Medical Same Day Emergency Care	C10
Neurovascular Same Day Emergency Care	C10
Portering and Security	C1
Staff Restaurant	C11
Stroke Unit	C9

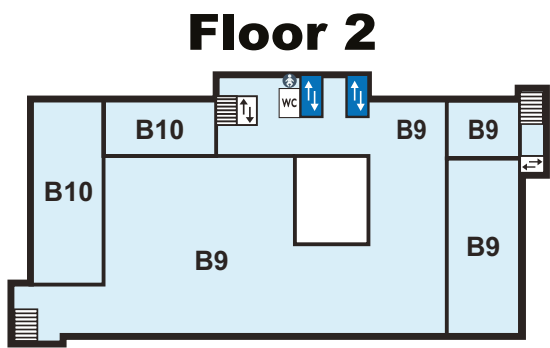


Floor 1

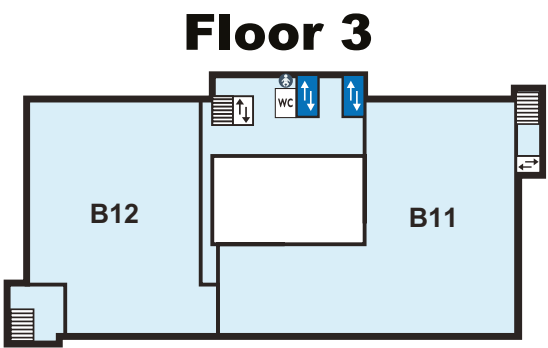
FLOOR 1	
ZONE A	
Breast and Sarcoma Service	A23
Day Theatres	A24
Early Pregnancy Unit	A23
Eye Day Ward (Eye Unit)	A22
Eye Theatres (Eye Unit)	A22
Eye Ward (Eye Unit)	A22
Gynaecology Outpatients	A23
Main Theatres	A39
Private Patients UHD (Ward 10)	A27
Trauma Orthopaedic Ambulatory Care Unit	A30
Ward 7L	A31
Ward 7R	A31
Ward 8	A29
Ward 9	A29
Ward 11	A27
Ward 12	A26
Ward 14	A26
Ward 15	A28
Ward 16	A28
Ward 17	A30
Ward 18	A30
ZONE B	
Antenatal and Maternity Ultrasound	B8
Critical Care Unit	B7
ZONE C	
Cardiac Intervention Unit	C26
Cardiac Physiology	C23
Coronary Care Unit	C23
Dorset Heart Clinic	C26
Older Persons Services Same Day Emergency Care	C23
Ward 21	C25
Ward 22	C25
Ward 23	C24
Ward 24	C24
Ward 25	C22
Ward 26	C22

FLOOR 2	
ZONE B	
Aspen Induction Ward (Maternity)	B9
Haven Birthing Suite (Maternity)	B9
Maternity Triage	B10
Spring	B9
Willow Antenatal Ward	B10
Woodland Labour Ward (Maternity)	B9

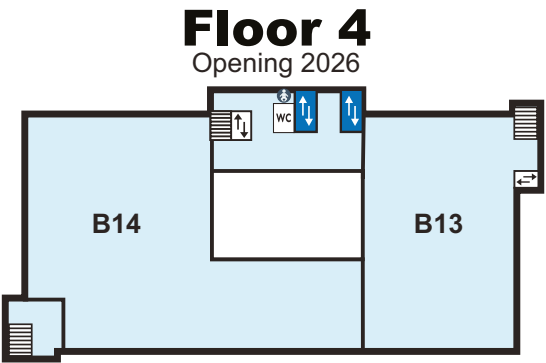
FLOOR 3	
ZONE B	
Acorn Transitional Care	B11
Mulberry Post natal Ward	B11
Neonatal Intensive Care Unit	B12



Floor 2



Floor 3



Floor 4
Opening 2026